

Air Traffic Flow & Capacity Management

CFMU ATFCM Monthly Summary

December 2009



EUROCONTROL

EUROPEAN ORGANISATION FOR THE SAFETY OF AIR NAVIGATION

Copyright:

© European Organisation for the Safety of Air Navigation EUROCONTROL; 2006.

Disclaimer:

This document is published by EUROCONTROL in the interests of exchange of information. It may be copied in whole or in part, providing that the copyright notice and disclaimer are included. The information contained in this document may not be modified without prior written permission from EUROCONTROL. EUROCONTROL makes no warranty, either implied or express, for the information contained in this document, neither does it assume any legal liability or responsibility for the accuracy, completeness or usefulness of this information.

Contact Details:

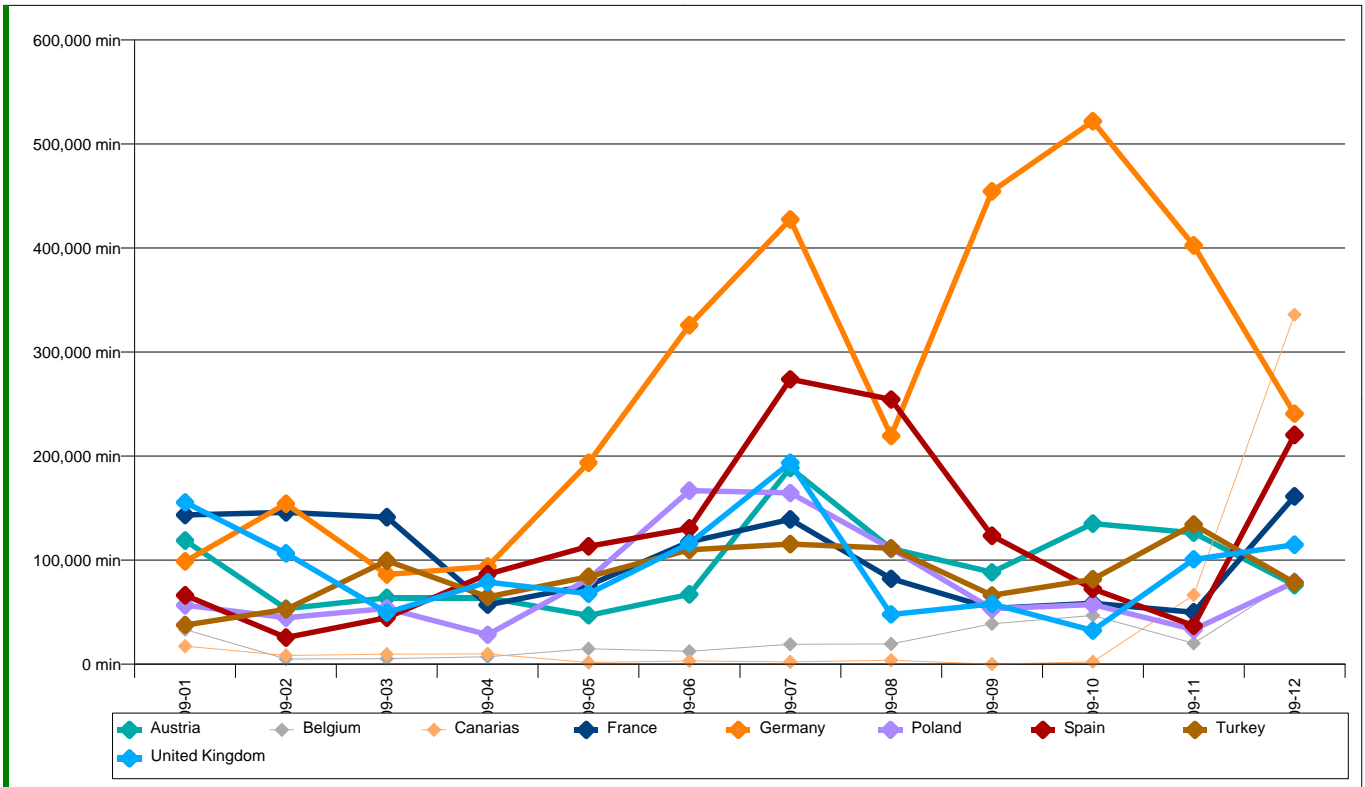
Central Flow Management Unit
User Relations and Development Bureau
Rue de la Fusée, 96
B - 1130 Brussels (BELGIUM)

Telephone: 00 32 (0)2 729.97.31

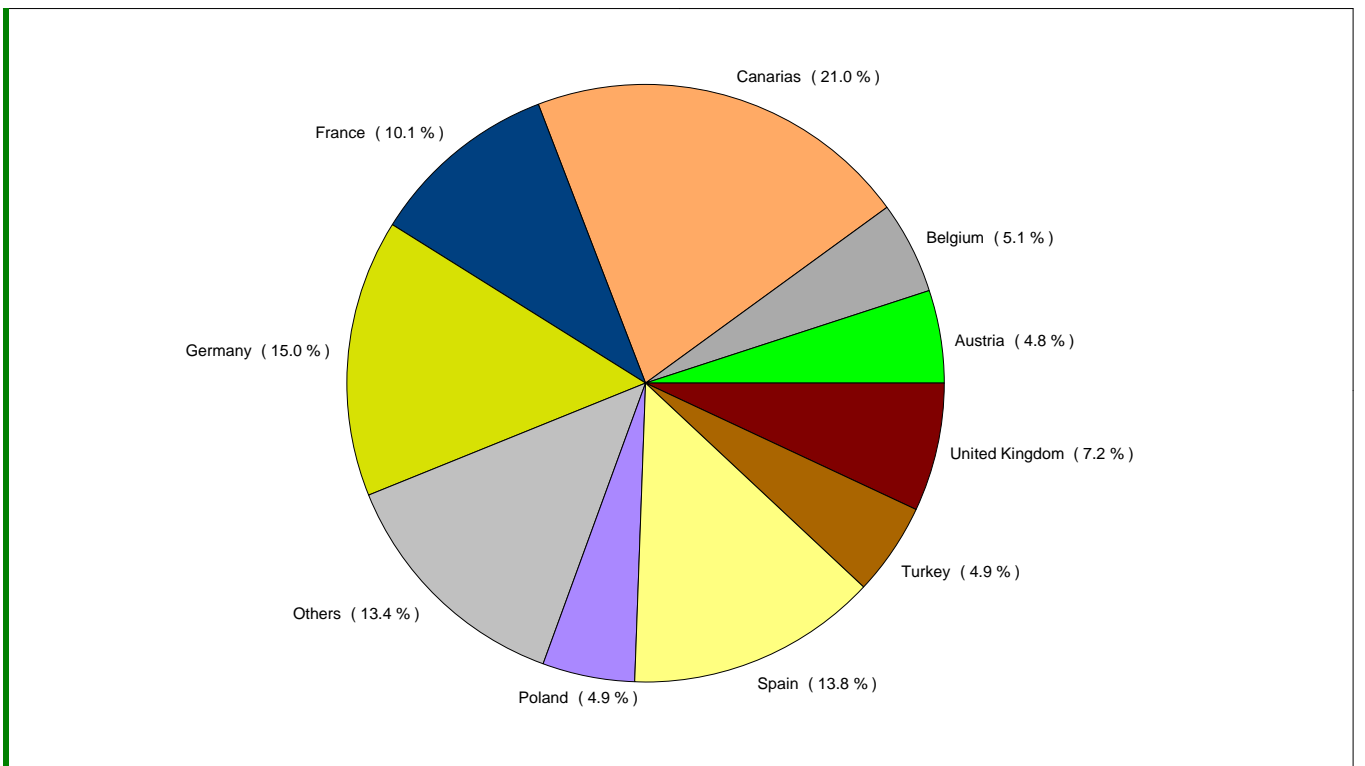
Fax: 00 32 (0)2 729.91.89

E-mail Address: <mailto:cfmu.customersupport@eurocontrol.int> (CFMU Customer Support)

ATFM DELAYS PER STATE

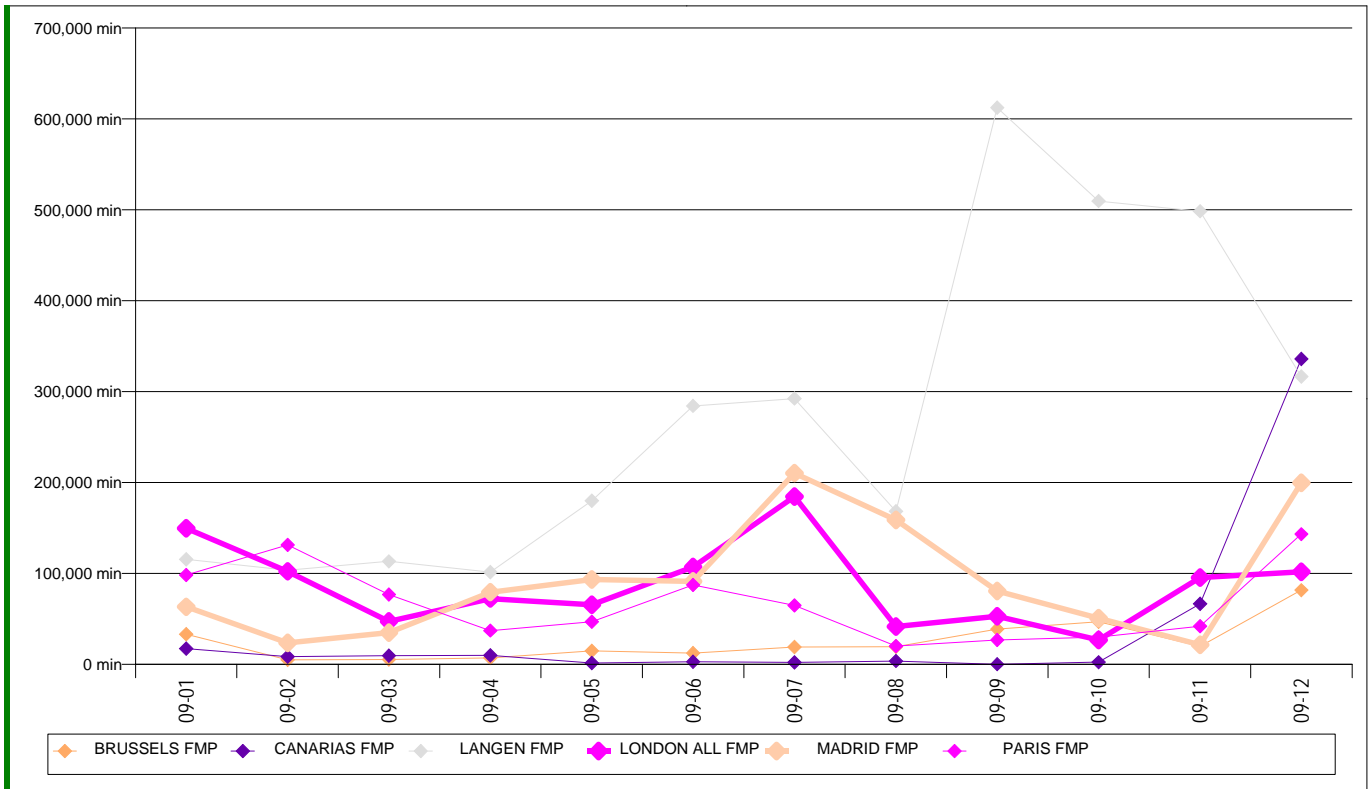


DECEMBER 2009 ATFM DELAY DISTRIBUTION PER STATE

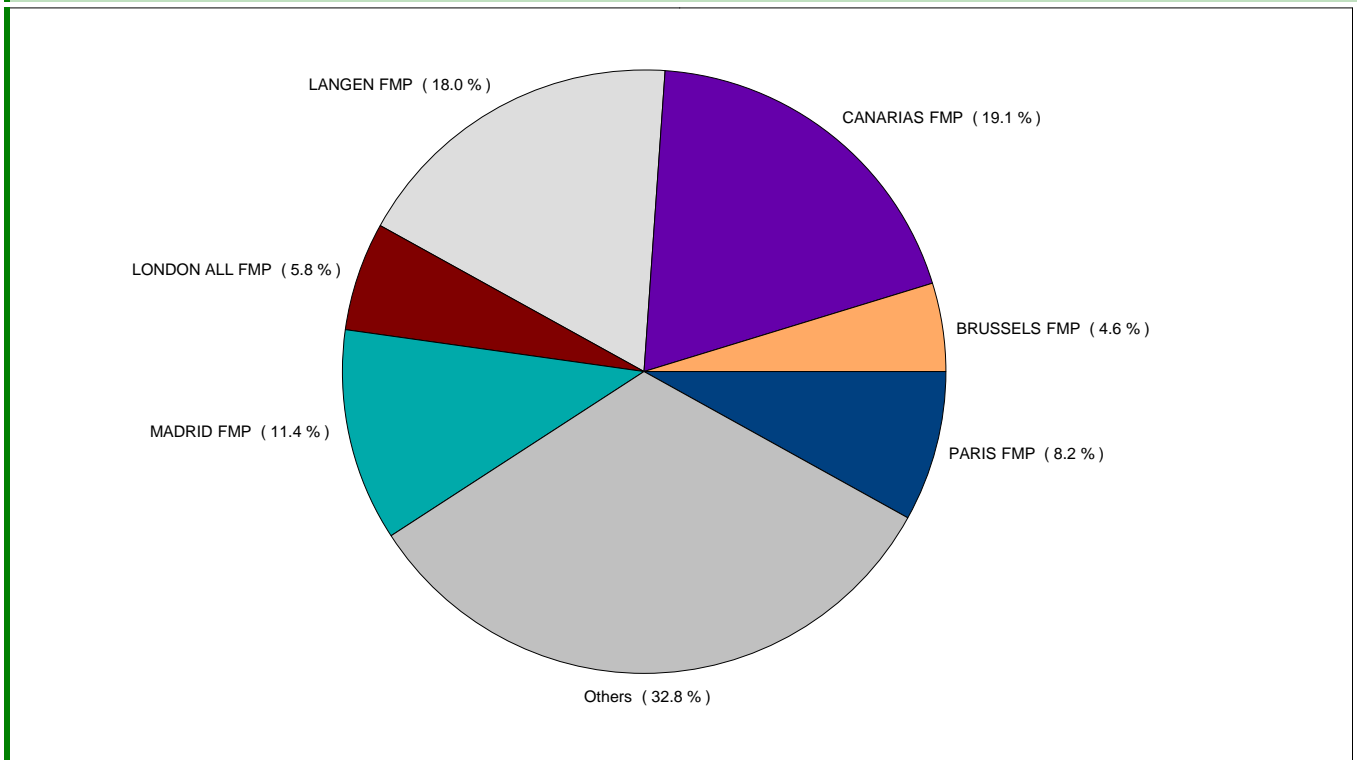


! The graphs presented in this page only display the countries where the current monthly delay is higher than 3% of the current total monthly delay

ATFM DELAYS PER FMP AREA

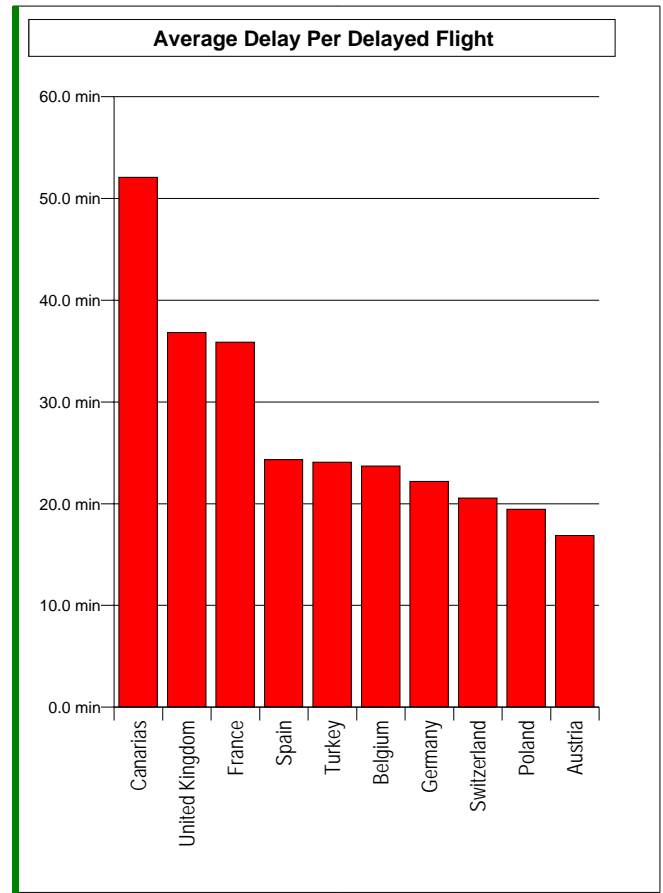
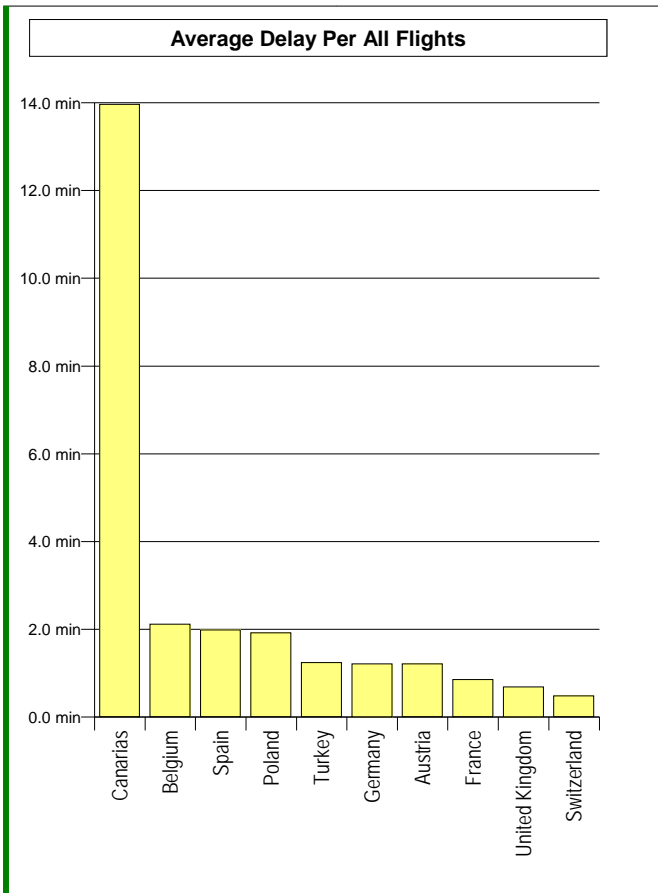


DECEMBER 2009 ATFM DELAY DISTRIBUTION PER FMP

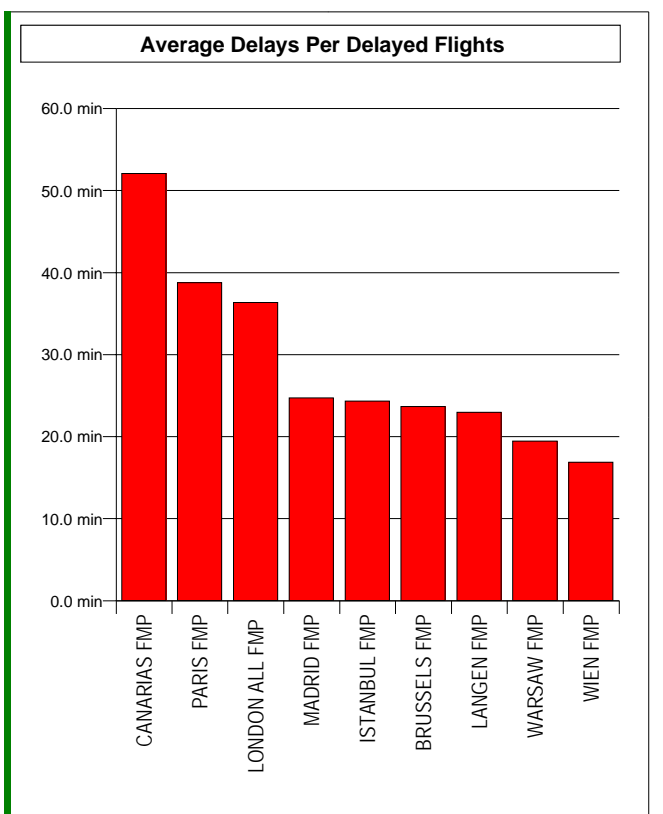
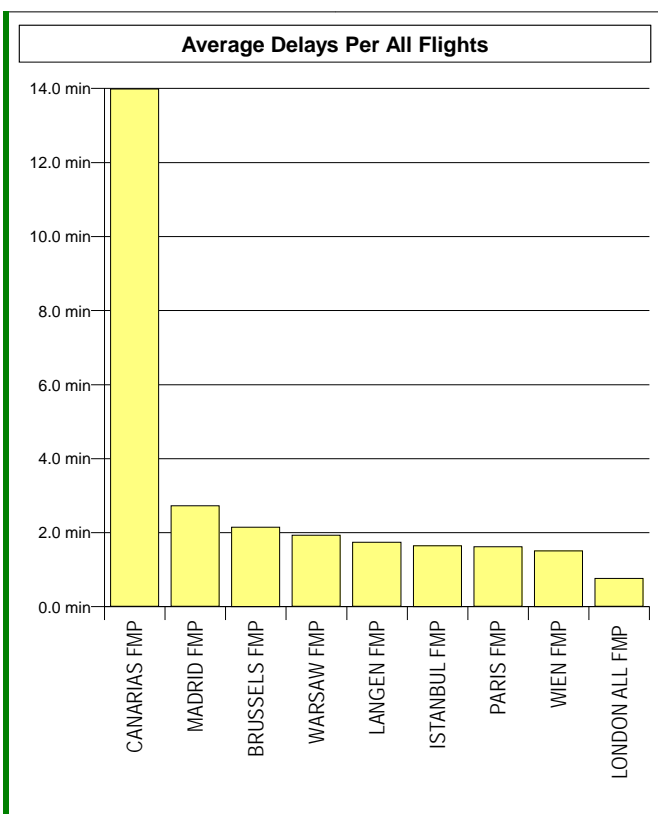


! The graphs presented in this page only display the FMPs where the current monthly delay is higher than 5% of the current total monthly delay

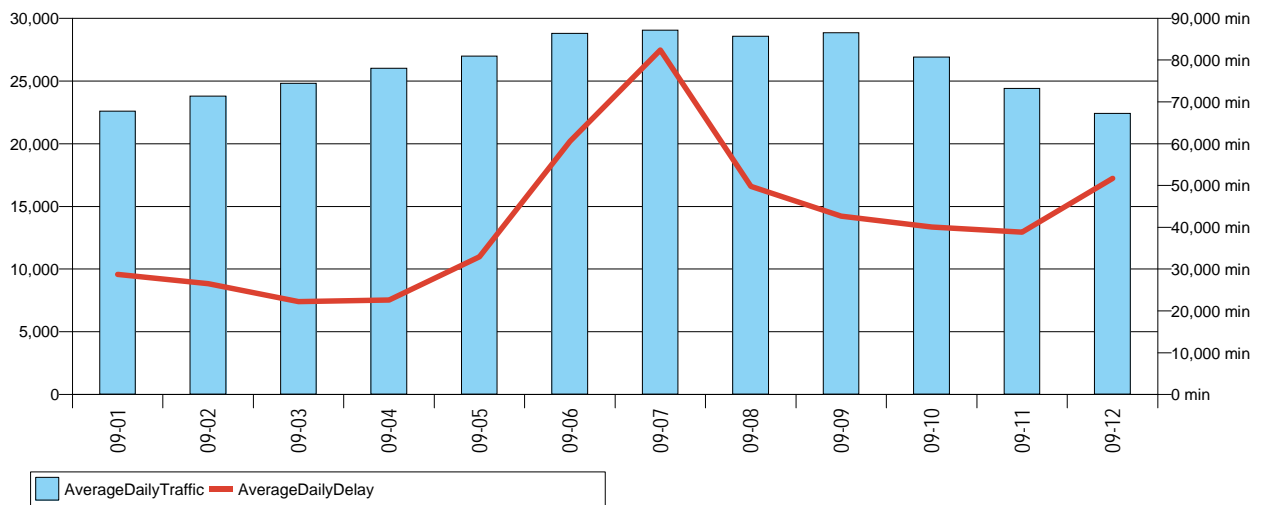
DISTRIBUTION OF THE AVERAGE ATFM DELAYS IN THE STATES (10 MOST DELAYED)



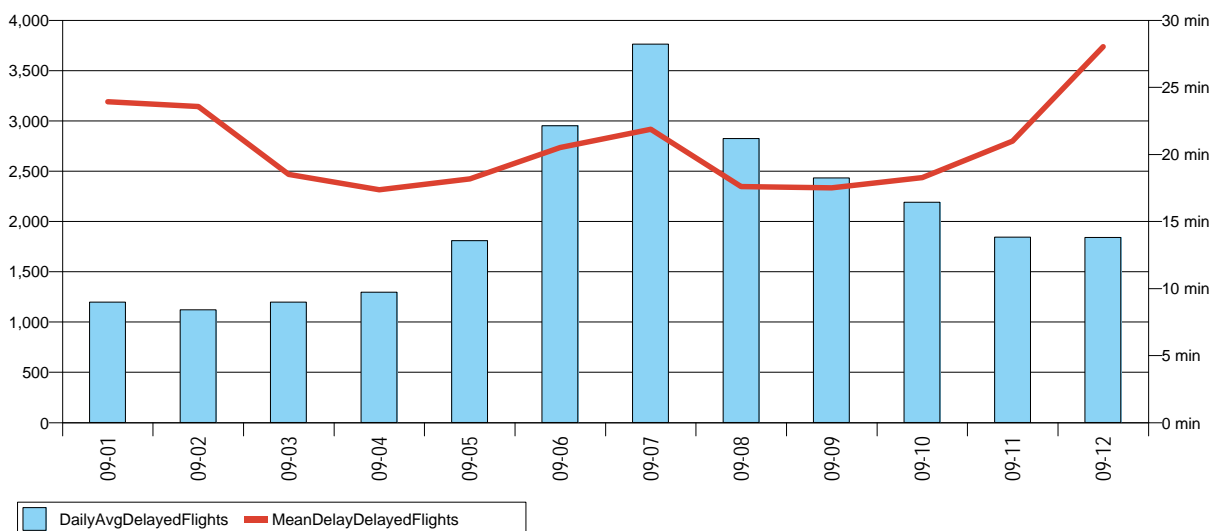
DISTRIBUTION OF THE AVERAGE ATFM DELAYS IN THE FMPs (10 MOST DELAYED)



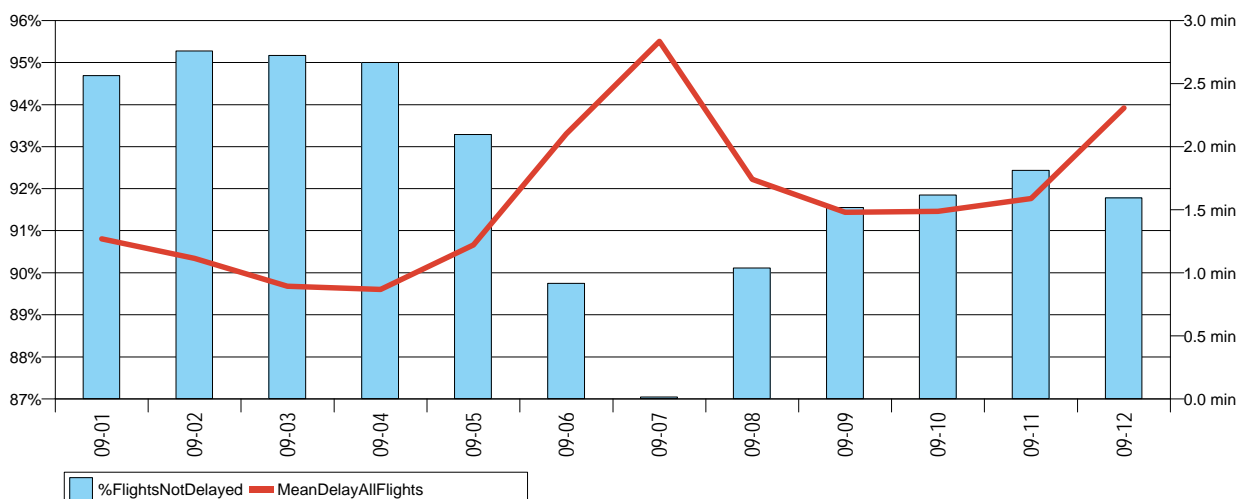
DAILY ATFM DATA - MONTHLY TREND IN TRAFFIC DEMAND AND DELAYS



DAILY ATFM DATA - MONTHLY TREND IN DELAYED FLIGHTS



DAILY ATFM DATA - TRAFFIC NOT DELAYED BY ATFM AND MEAN DELAY FOR ALL FLIGHTS



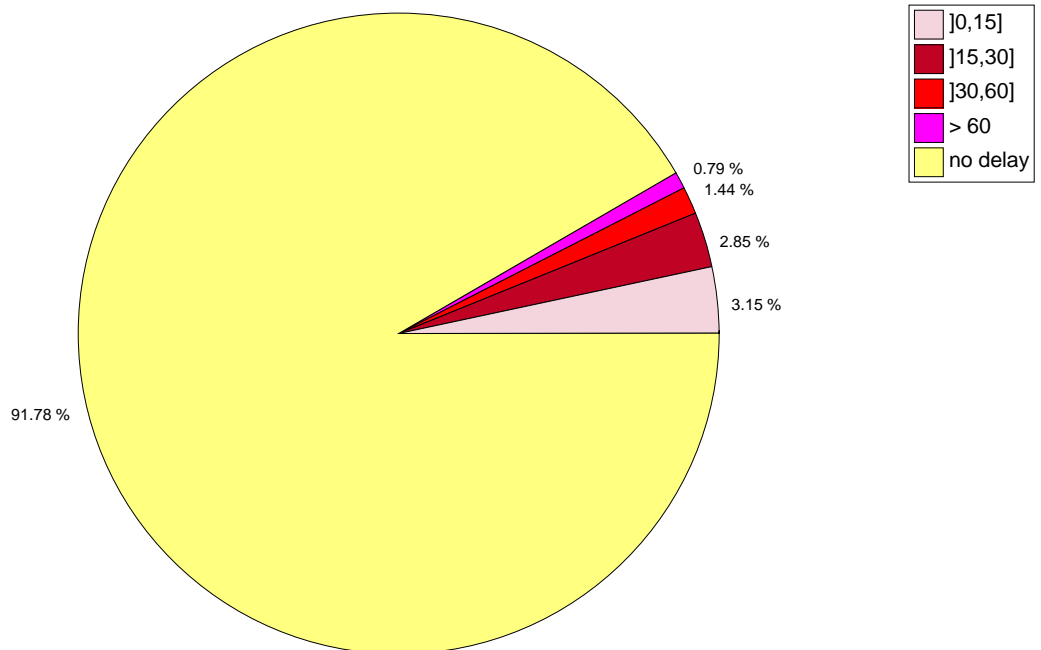
AVERAGE DAILY DATA

MONTH	DAILY TRAFFIC DEMAND	DAILY REGULATED FLIGHTS	DAILY DELAYED FLIGHTS	DAILY ATFM DELAY	MEAN DELAY FOR DELAYED FLIGHTS	MEAN DELAY FOR REGULATED FLIGHTS	MEAN DELAY FOR ALL FLIGHTS
09-01	22587	1956	1199	28689	23.9	14.7	1.3
09-02	23779	1908	1123	26486	23.6	13.9	1.1
09-03	24805	2158	1199	22189	18.5	10.3	0.9
09-04	26005	2397	1299	22574	17.4	9.4	0.9
09-05	26981	3281	1810	32925	18.2	10.0	1.2
09-06	28800	5009	2951	60558	20.5	12.1	2.1
09-07	29049	5915	3763	82375	21.9	13.9	2.8
09-08	28560	4786	2824	49766	17.6	10.4	1.7
09-09	28842	4265	2436	42675	17.5	10.0	1.5
09-10	26895	3803	2191	40049	18.3	10.5	1.5
09-11	24414	3182	1847	38795	21.0	12.2	1.6
09-12	22411	2841	1843	51682	28.0	18.2	2.3

TOTAL VALUES

MONTH	MONTHLY TRAFFIC DEMAND	MONTHLY REGULATED FLIGHTS	MONTHLY DELAYED FLIGHTS	MONTHLY ATFM DELAY	MEAN DELAY FOR DELAYED FLIGHTS	MEAN DELAY FOR REGULATED FLIGHTS	MEAN DELAY FOR ALL FLIGHTS
09-01	700206	60649	37171	889372	23.9	14.7	1.3
09-02	665821	53430	31452	741621	23.6	13.9	1.1
09-03	768944	66888	37155	687851	18.5	10.3	0.9
09-04	780158	71903	38955	677223	17.4	9.4	0.9
09-05	836412	101716	56120	1020689	18.2	10.0	1.2
09-06	863985	150257	88541	1816735	20.5	12.1	2.1
09-07	900514	183365	116652	2553632	21.9	13.9	2.8
09-08	885369	148362	87537	1542735	17.6	10.4	1.7
09-09	865259	127964	73078	1280248	17.5	10.0	1.5
09-10	833753	117892	67928	1241506	18.3	10.5	1.5
09-11	732414	95451	55400	1163864	21.0	12.2	1.6
09-12	694735	88057	57119	1602147	28.0	18.2	2.3

DISTRIBUTION OF TRAFFIC ACCORDING TO ATFM DELAY DURATION



SPECIAL EVENTS

Tuesday 01 December 2009

FRANKFURT/MAIN aerodrome capacity issues. single runway operations due to weather., WIEN-SCHWECHAT aerodrome capacity issues. PISA (MIL) Radar maintenance., LANGEN ACC Dusseldorf approach, Moenchengladbach sctr and sector 7 all regulated for the majority of the morning period. BRUSSELS (ACC-FIC) Huldensburg/Lux sectors combined due CANAC2 implementation. ISTANBUL/ATATURK arrivals affected due to high demand. MADRID/TORREON arr & dep due to southern configuration. Brussels HLC2 sctr due to CANAC Implementation.

Wednesday 02 December 2009

FRANKFURT/MAIN weather (IMC + heavy Flights). BRUSSELS-NATIONAL weather. ZURICH FLUGHAFEN, OSLO/GARDERMOEN low vis, PARIS/ORLY VILLACOUBLAY/VELIZY TOUSSUS-LE-NOBLE Staffing issues, MADRID/TORREON MADRID/BARAAS aerodrome capacity issues., MADRID/BARAAS APP weather. DUSSELDORF APP staffing . BRUSSELS-NATIONAL arr due to weather.

Thursday 03 December 2009

ISTANBUL/ATATURK : MUNICHEN, FRANKFURT/MAIN, WIEN-SCHWECHAT & ZURICH FLUGHAFEN low vis, ceiling or fog. VILAFRANCA (MIL.) CTR due RADAR maintenance. SHARM EL SHEIKH, HURGHADA high demand., DUSSELDORF ADL & sctr7 staffing issues. NICOSIA (ACC/FIC) E2S high demand. Brussels-CANAC implementation. UK, Ireland and North Sea coastal areas strong wind., FRANKFURT weather conditions. DUSSELDORF approach ATC staffing problems. MUNICH low , vis. LANGEN ACC staffing issues.

Friday 04 December 2009

FRANKFURT/MAIN weather. ISTANBUL/ATATURK arr. PISA (MIL) arr RADAR u/s. CANARIAS , ACC/FIC INB sector staffing issues. DUSSELDORF ADL & sctr7 staffing issues. CANARIAS , ACC/FIC INB ATC staffing.

Saturday 05 December 2009

South east Germany, Switzerland and northern Italy fog and low vis., ZURICH low vis. CANARIAS ACC/FIC Canarias East sctr ATC staffing issues., ISTANBUL/ATATURK aerodrome capacity. Frankfurt low ceiling.

Sunday 06 December 2009

UK, Ireland, Benelux and Northern Germany Strong wind. Madrid ATC capacity. Heathrow arr ATC staffing strong wind. Karlsruhe ERL sector severe turbulence Madrid departures aerodrome capacity. FRANKFURT arrivals low ceiling.

Monday 07 December 2009

Canarias staff shortage, Brussels Canac equipment. BRUSSELS-NATIONAL ARR ATC capacity. FRANKFURT/MAIN ARR weather. KOBENHAVN/KASTRUP ARR weather. MADRID/TORREON ARR/DEP ATC. WIEN-SCHWECHAT ARR aerodrome capacity. PARIS/ORLY ARR weather. CANARIAS ACC/FIC ATC Staffing. BRUSSELS (ACC-FIC) HULDENBERG+LUX SCTR ATC Equipment. GOTEBORG/LANDVETTER Ground radar problem. MADRID/BARAAS One of the control towers out of service for a while resolved by 1430. FRANKFURT/MAIN Low cloud ceiling. PRAHA/RUZYNE Fog.

Tuesday 08 December 2009

Canarias staffing and atc capacity issues. FRANKFURT/MAIN, BERLIN-TEGEL, SOUTHAMPTON, MADRID/BARAAS, PARIS-CHARLES DE GAULLE, PARIS/ORLY, LISBOA affected by weather. CANARIAS ACC/FIC, DUSSELDORF area staffing. BRUSSELS CANAC2 implementation.

Wednesday 09 December 2009

FRANKFURT/MAIN, BERLIN-TEGEL, SOUTHAMPTON, MADRID/BARAAS, PARIS-CHARLES DE GAULLE, PARIS/ORLY, LISBOA affected by weather. ISTANBUL/ATATURK aerodrome capacity. CANARIAS ACC staff related problems.

Thursday 10 December 2009

FRANKFURT/MAIN, GRAN CANARIA affected by weather. OSLO/GARDERMOEN single runway ops due Presidential visit. GENEVE arr/deps due staffing.

Friday 11 December 2009

Fog and very low cloud ceiling affecting a number London TMA airports LONDON/CITY and LONDON GATWICK. MANCHESTER, SOUTHAMPTON and TOULOUSE/BLAGNAC also suffering delays due low vis. FRANKFURT/MAIN low ceiling and rain. FRANKFURT/MAIN, MANCHESTER, EDINBURGH, LONDON LUTON, LONDON HEATHROW weather conditions. MARSEILLE-PROVENCE, GENEVE, ISTANBUL/ATATURK capacity issues. BRUSSELS (ACC-FIC) HLC issues due to new system CANAC2 for a short period.

Saturday 12 December 2009

MADRID/BARAAS Fog. LONDON LUTON runway lighting failure and low vis. FRANKFURT/MAIN low ceiling, rwy 07 in use and no ILS. MADRID ACC/FIC ZML+ZMU combined for majority of morning period. CANARIAS ACC/FIC North-Bajo sctr capacity issues

Sunday 13 December 2009

FRANKFURT/MAIN snow/rain. ISTANBUL/ATATURK arrivals aerodrome capacity. SHARM EL SHEIK aerodrome capacity. CYPRUS 3 sectors ATC capacity. MADRID 4 sectors ATC capacity. VIENNA West sector ATC capacity.

Monday 14 December 2009

Fog, snow and low ceiling affecting several regions. FRANKFURT/MAIN, BRUSSELS-NATIONAL, MADRID/BARAAS, OSLO/GARDERMOEN, ZURICH FLUGHAFEN, LONDON HEATHROW, LONDON STANSTED affected by weather conditions. ISTANBUL/ATATURK capacity issues. ZAKINTHOS/DIONISIOS SOLOMOS RADAR failure. DUSSELDORF ACC/FIC MGB and ADL sectors staffing issues. GCCC RU sector global staffing., CATANIA closed 1520-1820 due blocked runway. LANGEN due to ATC staffing problems. CANARIAS ATC staffing problems.

Tuesday 15 December 2009

CANARIAS ACC/FIC INB sector ATC capacity issues. STOCKHOLM/BROMMA, COPENHAGEN snow.

Wednesday 16 December 2009

CANARIAS ACC/FIC ATC capacity. LONDON HEATHROW low visibility. BERLIN-TEGEL departures affected due snow clearance. ISTANBUL/ATATURK, MADRID/BARAAS, WIEN-SCHWECHAT, ZURICH FLUGHAFEN arrivals affected. LONDON HEATHROW snow problems. LONDON CITY snow. FRANKFURT low ceiling. STUTGART, HAMBURG staffing problems. CANARIES staff shortage. PARIS-CHARLES DE GAULLE, PARIS/ORLY, KOBENHAVN/KASTRUP, HAMBURG snow problems. LANZAROTE staffing problems.

Thursday 17 December 2009

Europe region snow problems. France, Belgium and UK affected the most. BRUSSELS, PARIS-CHARLES DE GAULLE PARIS/ORLY, KOBENHAVN/KASTRUP, HAMBURG, EDINBURGH snow. MAASTRICHT UAC resectorisation problems. VIENNA capacity issues. BRUSSELS-NATIONAL closed due to snow 20:47-23:59.

Friday 18 December 2009

All London area airports affected by snow. BRUSSELS-NATIONAL, FRANKFURT/MAIN, HAMBURG, BERLIN-TEGEL, PARIS-CHARLES DE GAULLE, PARIS/ORLY, ERSEY snow. BERLIN-TEGEL, PARIS-CHARLES DE GAULLE de-icing problems. MADRID/BARAAS capacity issues. CANARIAS ACC/FIC AERODROMES and sectors strong winds. WARSZAWA/ACC high delays in C and D sectors. UK, Germany, Poland, France, Turkey, Spain and Switzerland all affected by the weather. Poland, Maastricht, Germany and Austria enroute problems due weather.

Saturday 19 December 2009

CHAMBERY/AIX-LES-BAINS, ANNECY-MEYTHET, LYON SAINT-EXUPERY, BREST-GUIPAVAS, Italy 9 airports and Croatia 4 airports closed due to snow problems. GENEVE staffing issues. CANARIAS ACC/FIC aerodromes and sectors strong winds. CHAMBERY/AIX-LES-BAINS closed in the morning. LONDON STANSTED closed due to snow (17:00-00:00).

Sunday 20 December 2009

BRUSSELS-NATIONAL, CHARLEROI/BRUSSELS SOUTH, DUSSELDORF, MANCHESTER, AMSTERDAM/SCHIPHOL, ROTTERDAM, LANZAROTE, PULA, POITIERS/BIARD, PARIS-CHARLES DE GAULLE, LILLE-LESQUIN, TORINO/CASELLE, MALMO/STURUP snow or ice on the RWY. All these airports were either closed or experiencing severe disturbances to the operations. CANARIAS ACC/FIC aerodromes and sectors suffering strong winds. NICOSIA (ACC/FIC) due ATC capacity. BRUSSELS-NATIONAL, CHARLEROI/BRUSSELS SOUTH, FRANKFURT/MAIN, DUSSELDORF, KOLN/BONN, MUNCHEN, MANCHESTER, AMSTERDAM/SCHIPHOL, PARIS-CHARLES DE GAULLE, GENEVE, ISTANBUL/ATATURK affected by snow afternoon/evening inducing heavy delays and making airline ops very difficult. LANZAROTE aerodrome capacity issues.

Monday 28 December 2009

Canarias atc staffing and atc capacity. HELSINKI, MADRID/BARAAS, MANCHESTER and LONDON HEATHROW arrivals affected by weather. FUERTEVENTURA, HELSINKI-VANTAA, MADRID ACC/FIC and GRAN CANARIA arrivals atc capacity. CANARIAS ACC/FIC staffing and atc capacity issues. FIR-WIEN NOR, BRATISLAVA/FIR atc capacity. MADRID/BARAAS ARR until 22:20 low visibility.

Tuesday 29 December 2009

HAMBURG, BERLIN-TEGEL Low visibility. MADRID/TORREON arrival and departure affected due runway config at MADRID/BARAAS. PARIS/ORLY, PARIS-CHARLES DE GAULLE Low visibility. KIEV/BORYSPIL arrival affected due to clearing snow. KIEV/BORYSPIL heavy snow. ISTANBUL/ATATURK aerodrome capacity. AALBORG (CIV/MIL) ILS failure and low visibility. CANARIAS ACC/FIC very high delays for INB sector.

Wednesday 30 December 2009

KIEV/BORYSPIL aircraft incident. LONDON GATWICK, LONDON/CITY, LONDON HEATHROW, BERLIN-TEGEL Low vis and weather issues. GALICIA TMA capacity issues. BERLIN-TEGEL snow. CANARIAS ACC/FIC RE2 and IGC sectors affected by weather.

Thursday 31 December 2009

BERLIN-TEGEL snow. LANZAROTE atc capacity. ISTANBUL/ATATURK aerodrome capacity.