

Air Traffic Flow & Capacity Management

CFMU ATFCM Monthly Summary

April 2009



EUROCONTROL

EUROPEAN ORGANISATION FOR THE SAFETY OF AIR NAVIGATION

Copyright:

© European Organisation for the Safety of Air Navigation EUROCONTROL; 2006.

Disclaimer:

This document is published by EUROCONTROL in the interests of exchange of information. It may be copied in whole or in part, providing that the copyright notice and disclaimer are included. The information contained in this document may not be modified without prior written permission from EUROCONTROL. EUROCONTROL makes no warranty, either implied or express, for the information contained in this document, neither does it assume any legal liability or responsibility for the accuracy, completeness or usefulness of this information.

Contact Details:

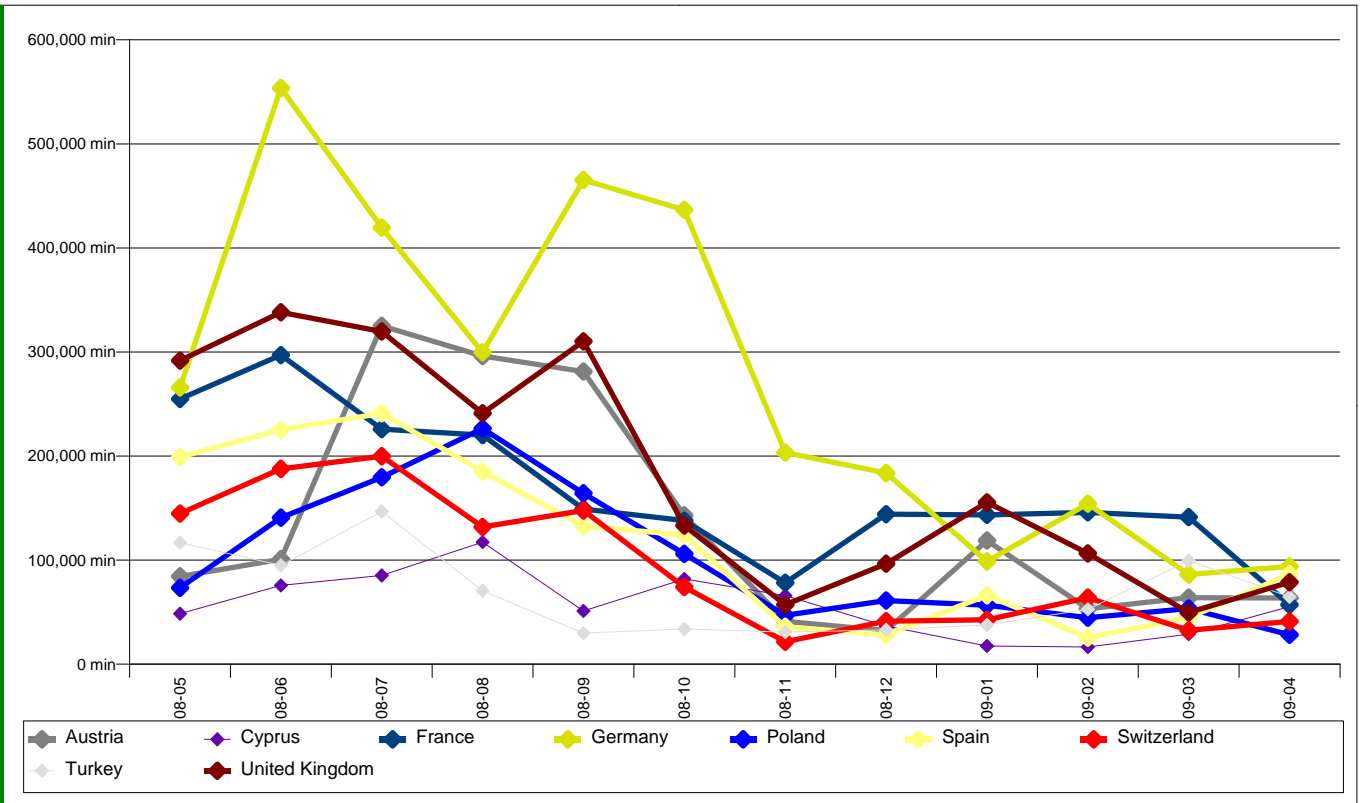
Central Flow Management Unit
User Relations and Development Bureau
Rue de la Fusée, 96
B - 1130 Brussels (BELGIUM)

Telephone: 00 32 (0)2 729.97.31

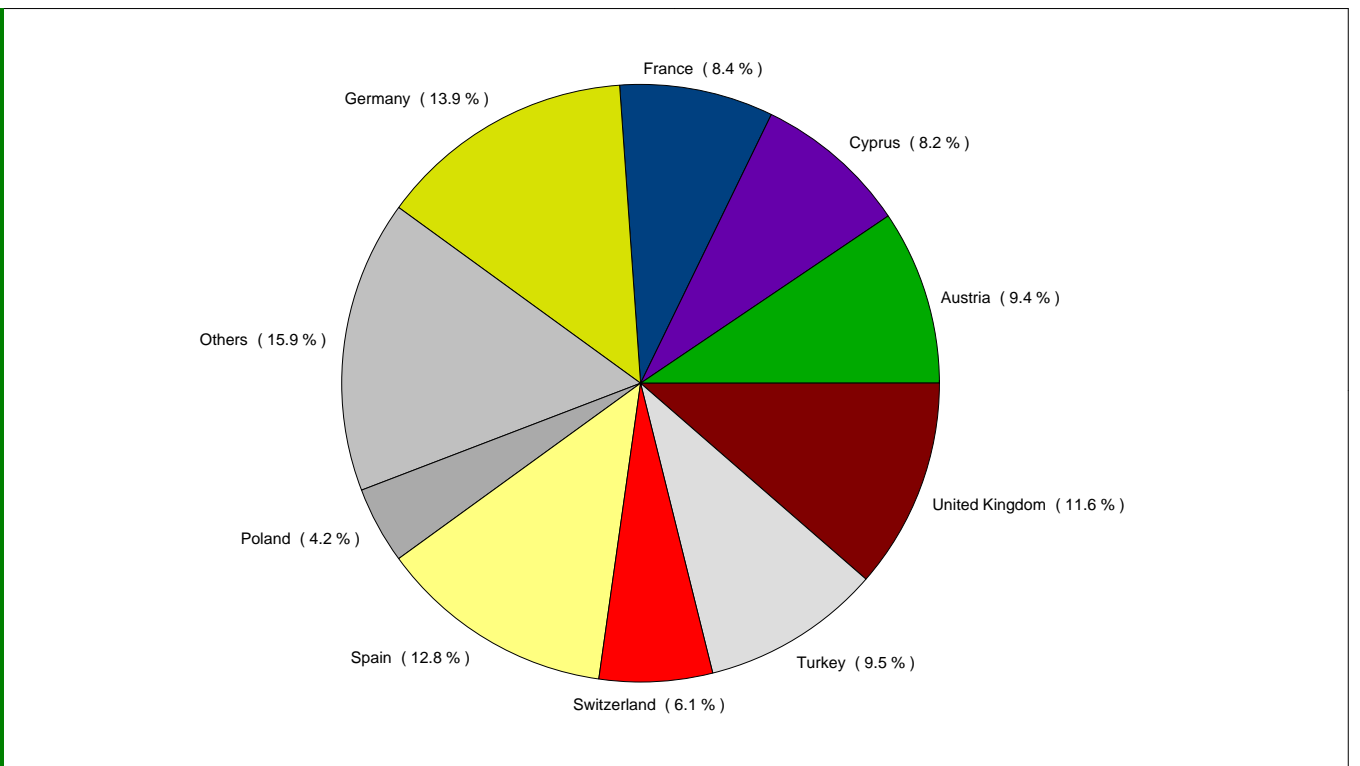
Fax: 00 32 (0)2 729.91.89

E-mail Address: <mailto:cfmu.customersupport@eurocontrol.int> (CFMU Customer Support)

ATFM DELAYS PER STATE

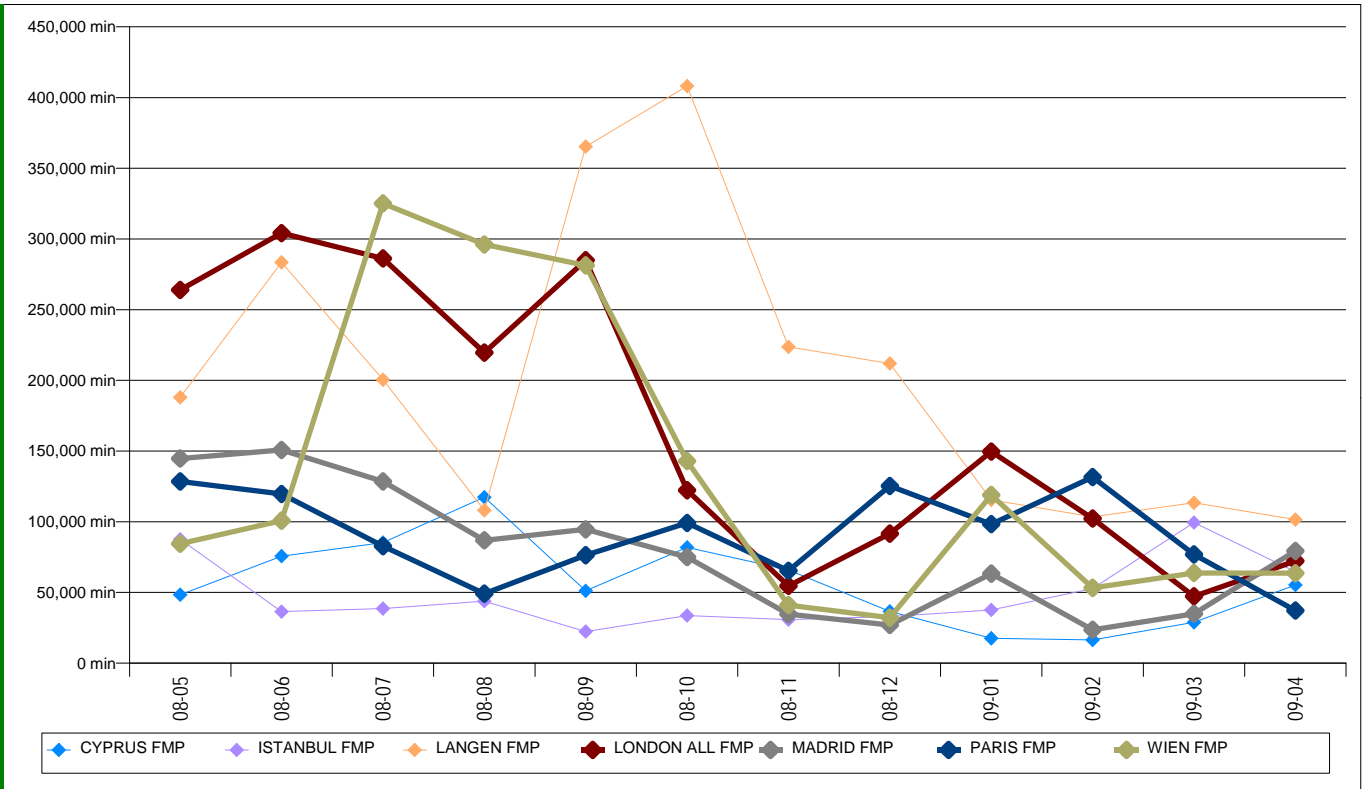


APRIL 2009 ATFM DELAY DISTRIBUTION PER STATE

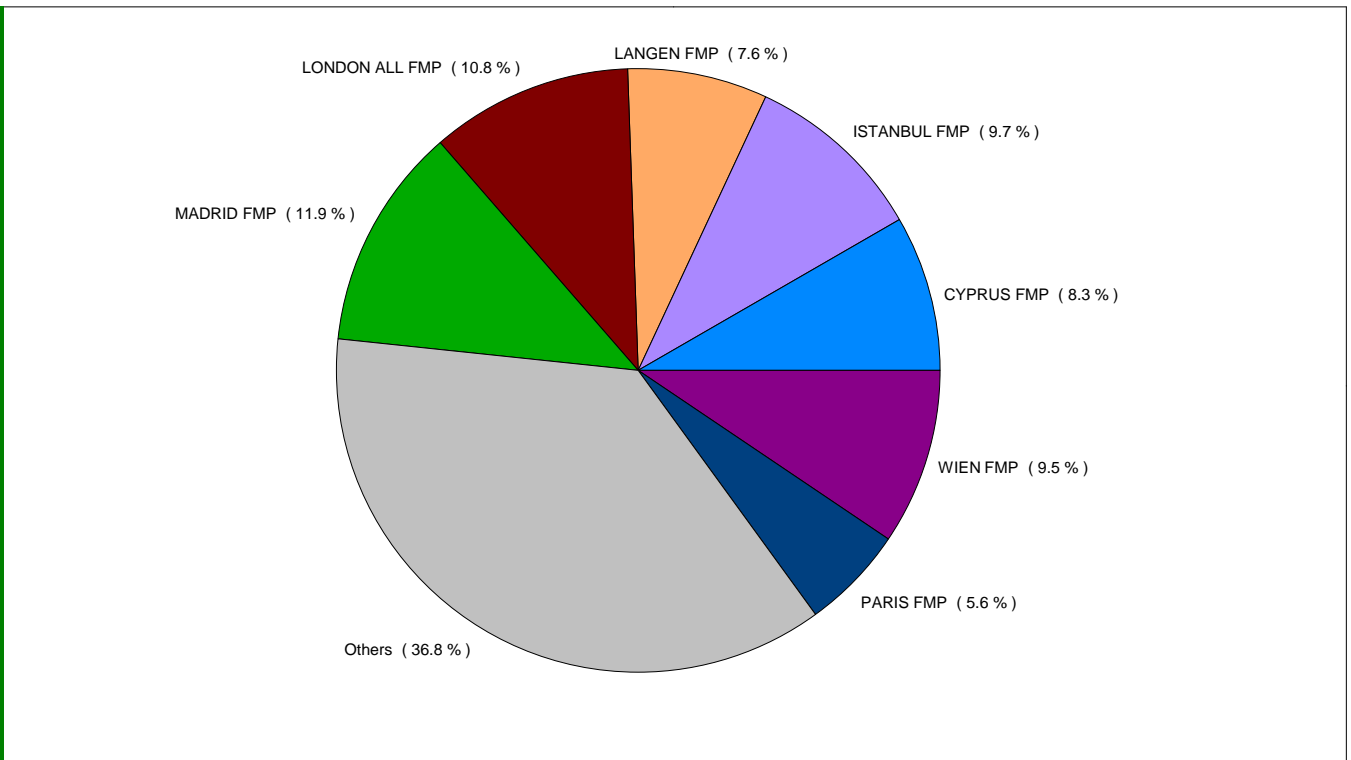


! The graphs presented in this page only display the countries where the current monthly delay is higher than 3% of the current total monthly delay

ATFM DELAYS PER FMP AREA

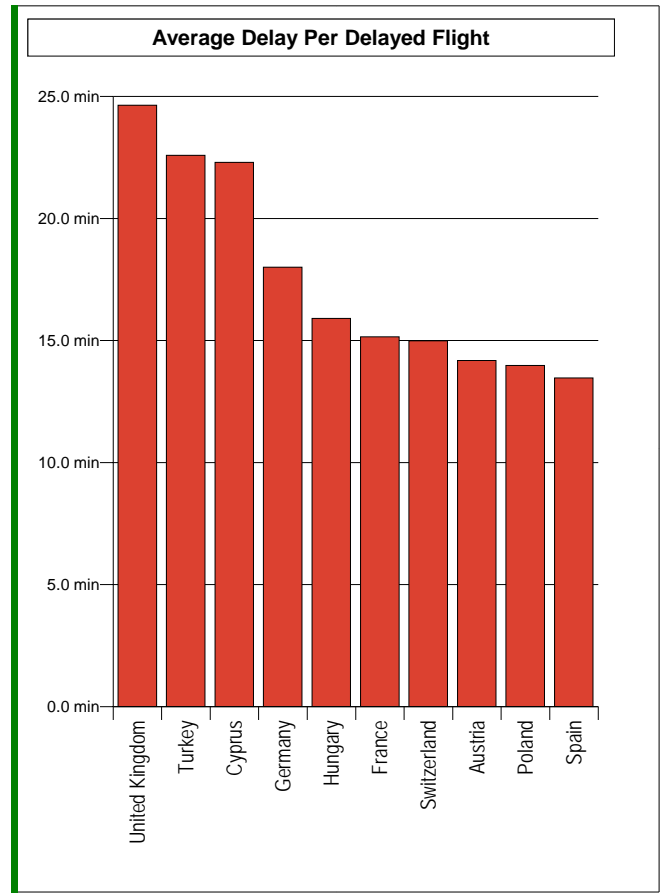
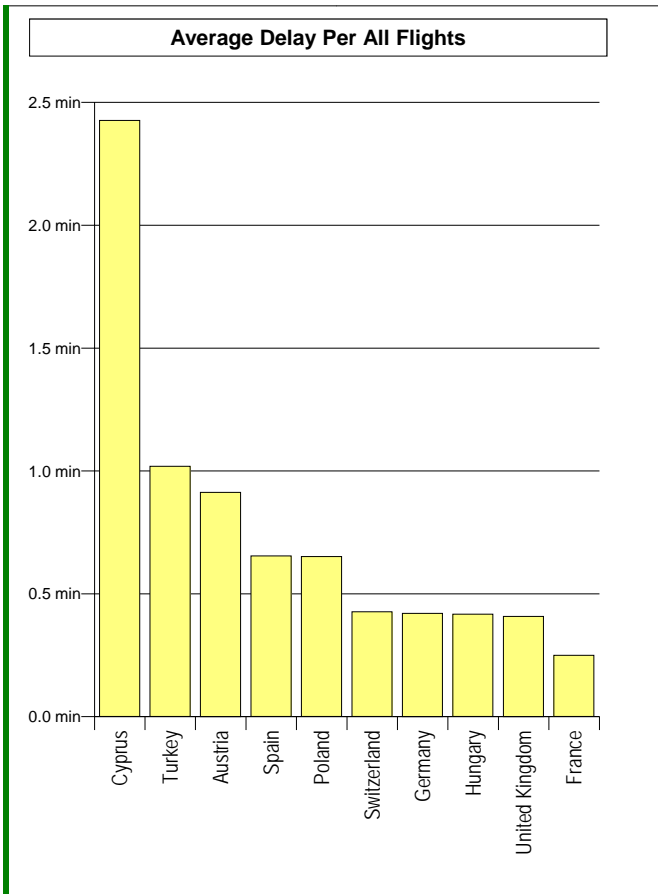


APRIL 2009 ATFM DELAY DISTRIBUTION PER FMP

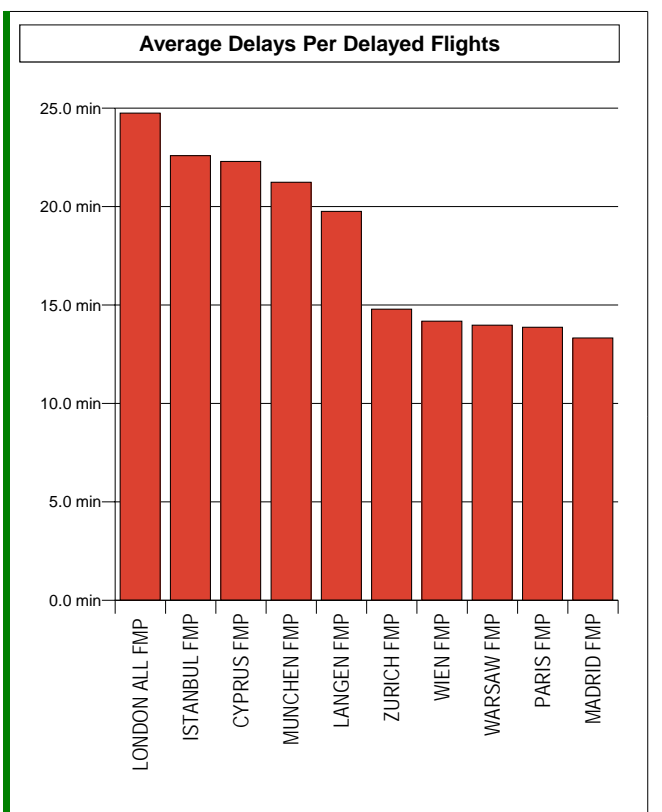
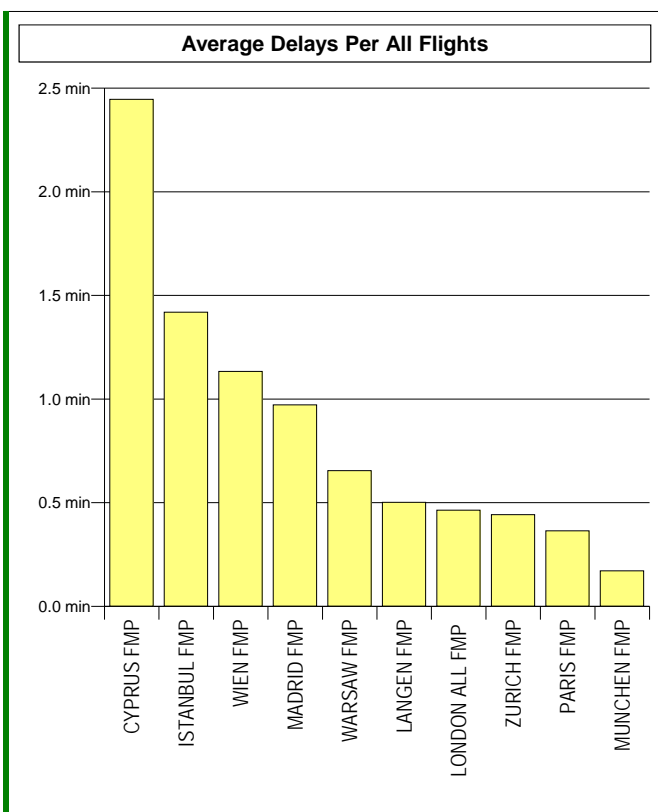


! The graphs presented in this page only display the FMPs where the current monthly delay is higher than 5% of the current total monthly delay

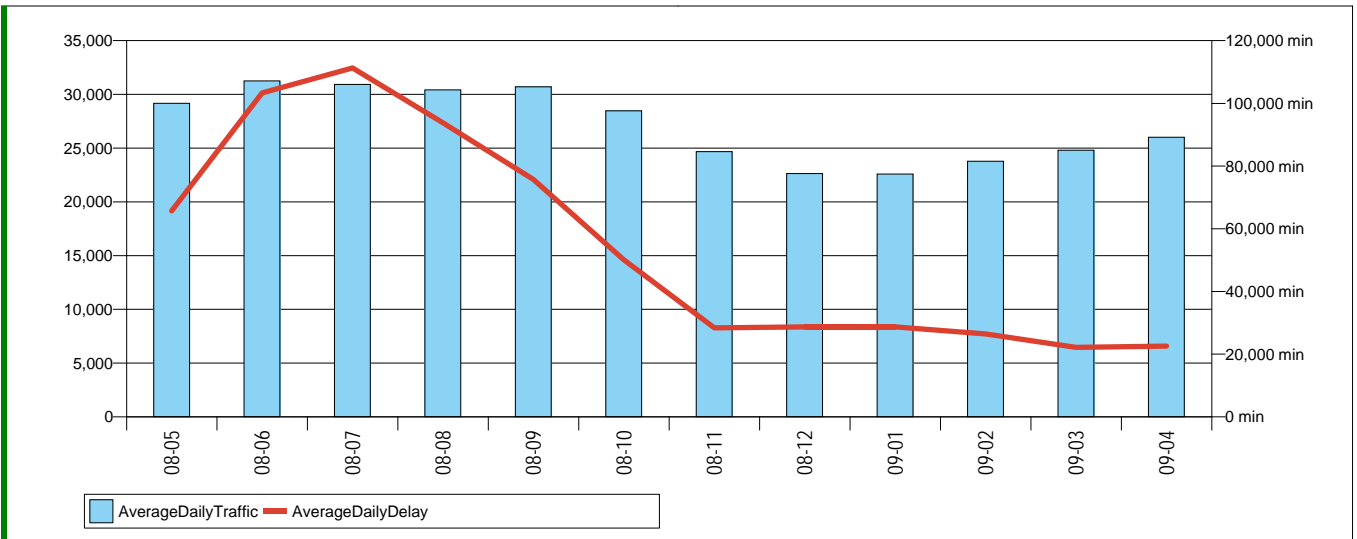
DISTRIBUTION OF THE AVERAGE ATFM DELAYS IN THE STATES (10 MOST DELAYED)



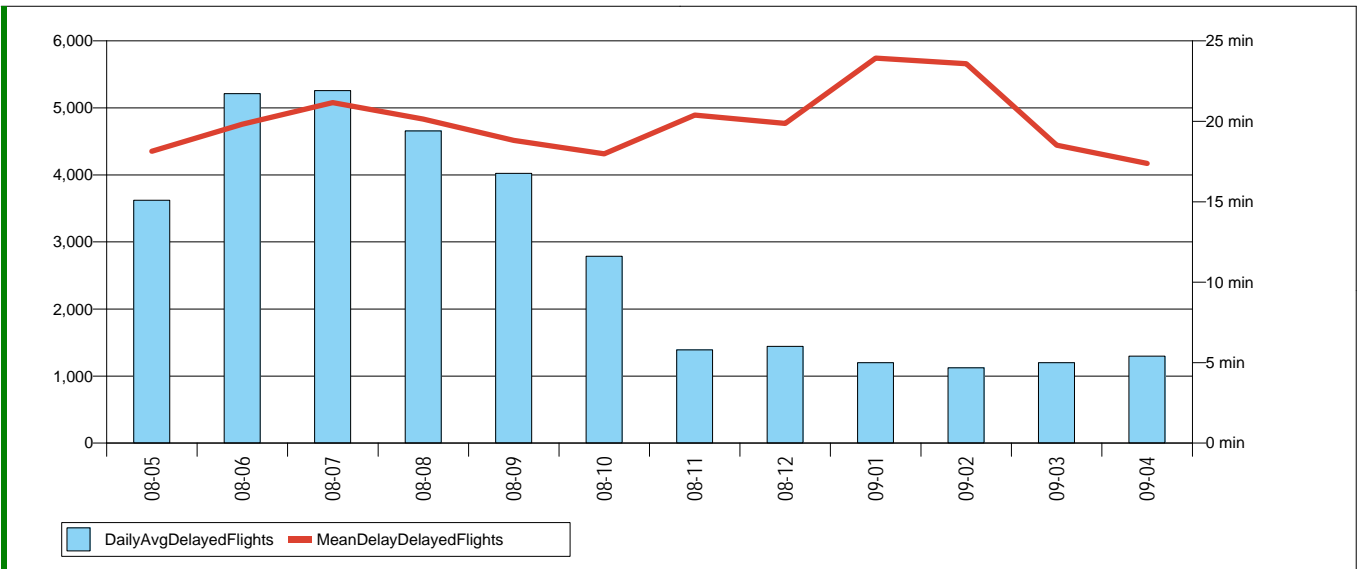
DISTRIBUTION OF THE AVERAGE ATFM DELAYS IN THE FMPs (10 MOST DELAYED)



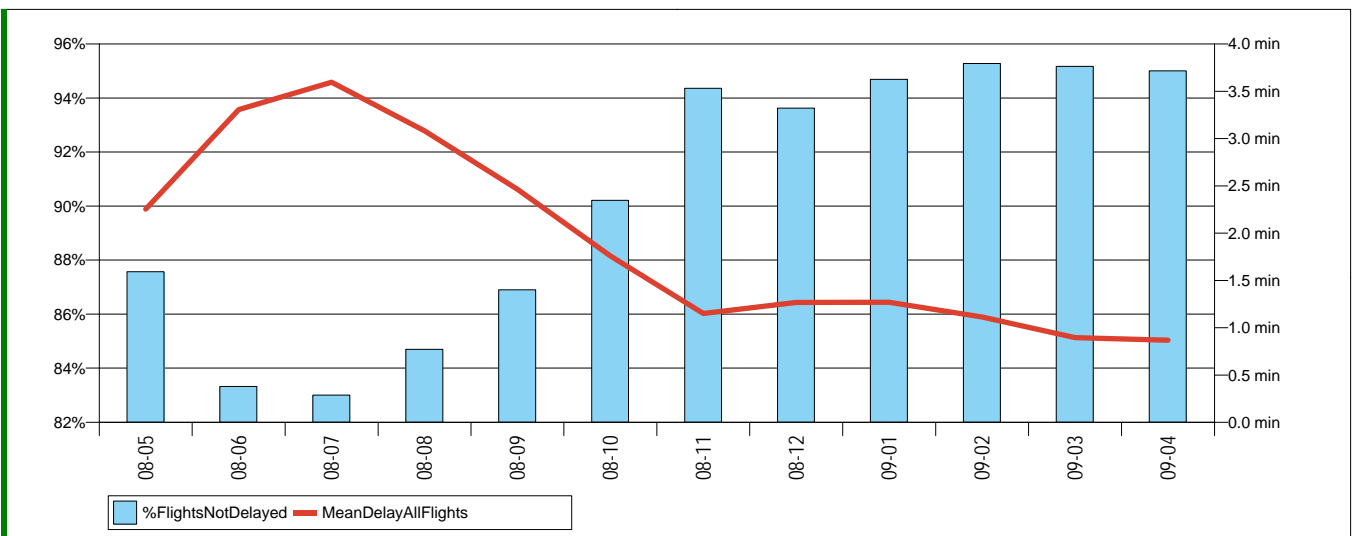
DAILY ATFM DATA - MONTHLY TREND IN TRAFFIC DEMAND AND DELAYS



DAILY ATFM DATA - MONTHLY TREND IN DELAYED FLIGHTS



DAILY ATFM DATA - TRAFFIC NOT DELAYED BY ATFM AND MEAN DELAY FOR ALL FLIGHTS



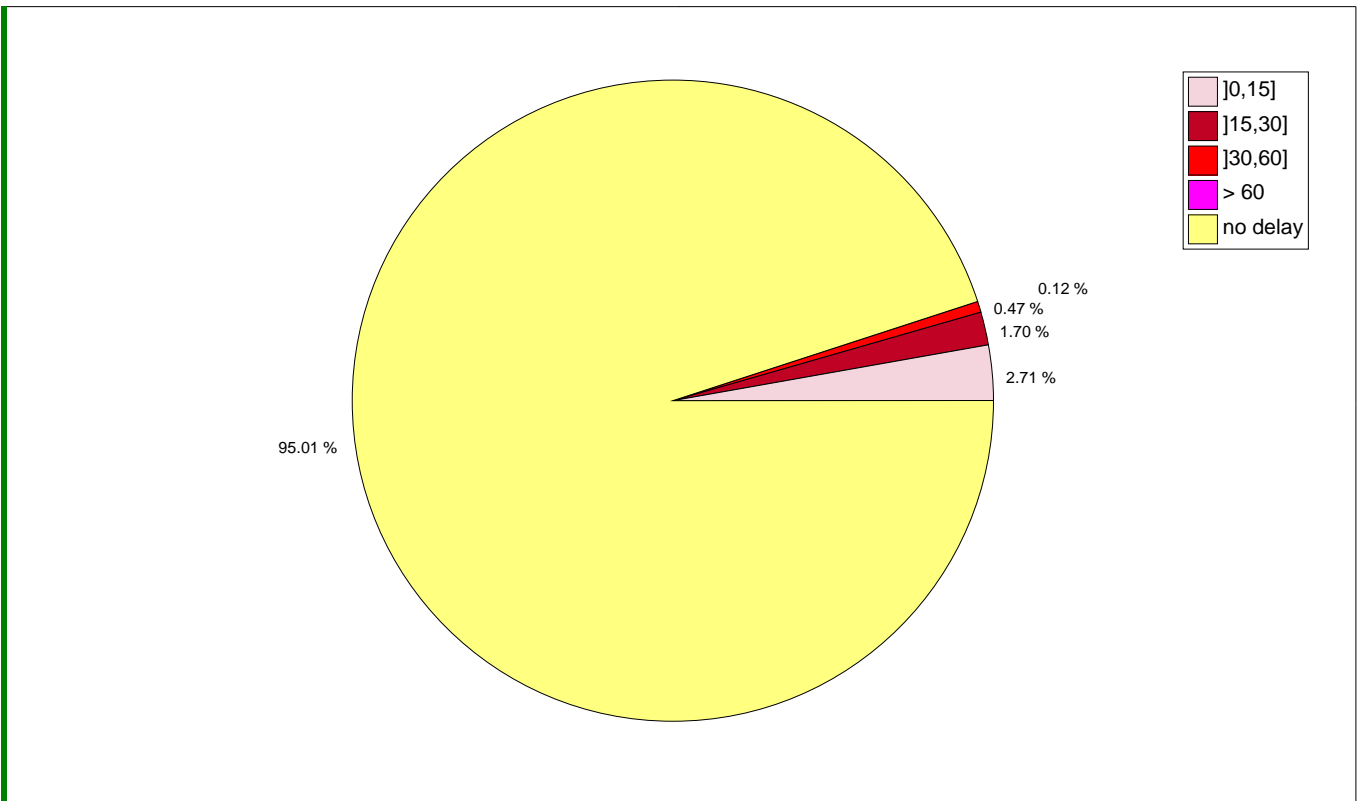
AVERAGE DAILY DATA

MONTH	DAILY TRAFFIC DEMAND	DAILY REGULATED FLIGHTS	DAILY DELAYED FLIGHTS	DAILY ATFM DELAY	MEAN DELAY FOR DELAYED FLIGHTS	MEAN DELAY FOR REGULATED FLIGHTS	MEAN DELAY FOR ALL FLIGHTS
08-05	29169	6386	3625	65758	18.1	10.3	2.3
08-06	31255	8617	5214	103342	19.8	12.0	3.3
08-07	30940	8455	5260	111295	21.2	13.2	3.6
08-08	30428	7553	4656	93772	20.1	12.4	3.1
08-09	30718	6868	4025	75722	18.8	11.0	2.5
08-10	28465	4990	2786	50076	18.0	10.0	1.8
08-11	24689	2459	1392	28385	20.4	11.5	1.1
08-12	22635	2470	1443	28690	19.9	11.6	1.3
09-01	22587	1956	1199	28689	23.9	14.7	1.3
09-02	23779	1908	1123	26486	23.6	13.9	1.1
09-03	24805	2158	1199	22189	18.5	10.3	0.9
09-04	26005	2397	1299	22574	17.4	9.4	0.9

TOTAL VALUES

MONTH	MONTHLY TRAFFIC DEMAND	MONTHLY REGULATED FLIGHTS	MONTHLY DELAYED FLIGHTS	MONTHLY ATFM DELAY	MEAN DELAY FOR DELAYED FLIGHTS	MEAN DELAY FOR REGULATED FLIGHTS	MEAN DELAY FOR ALL FLIGHTS
08-05	904231	197965	112362	2038502	18.1	10.3	2.3
08-06	937663	258520	156405	3100271	19.8	12.0	3.3
08-07	959138	262109	163051	3450145	21.2	13.2	3.6
08-08	943257	234147	144322	2906940	20.1	12.4	3.1
08-09	921548	206046	120735	2271667	18.8	11.0	2.5
08-10	882428	154678	86365	1552350	18.0	10.0	1.8
08-11	740655	73759	41766	851550	20.4	11.5	1.1
08-12	701700	76583	44746	889386	19.9	11.6	1.3
09-01	700206	60649	37171	889372	23.9	14.7	1.3
09-02	665821	53430	31452	741621	23.6	13.9	1.1
09-03	768944	66888	37155	687851	18.5	10.3	0.9
09-04	780158	71903	38955	677223	17.4	9.4	0.9

DISTRIBUTION OF TRAFFIC ACCORDING TO ATFM DELAY DURATION



SPECIAL EVENTS

Wednesday 01 April 2009

AMSTERDAM/SCHIPHOL : REGs low visibility. FRANKFURT/MAIN : ARR REG all day due to wind direction, RWY18 not available ? RWY07L/07R only possible. HAMBURG : ARR REG due to capacity. ISTANBUL/ATATURK : ARR due to capacity. RHEIN UAC : SAL sector ATC Staffing. MADRID ACC/FIC : BLI sector ATC Staffing. failure of French FPL System but no action needed by CFMU.

Thursday 02 April 2009

LONDON/CITY : REGs early morning fog and afternoon due to G20 Summit. BORDEAUX/MERIGNAC : low visibility. FRANKFURT/MAIN : ARR REG all day due to wind direction, RWY18 not available ? RWY07L/07R only possible. FRIEDRICHSHAFEN : due to AERO2009. East sector pre-tactically. Greek strike 21 REGs in place. MUNCHEN : ATC Staffing. GENEVE : capacity reduction. LO south Sector capacity reduction

Friday 03 April 2009

LONDON/CITY, MANCHESTER, EDINBURGH, PARIS-CHARLES DE GAULLE, PARIS-CHARLES DE GAULLE, LONDON GATWICK : REGs all with low visibility. FRIEDRICHSHAFEN : Aero2009. ATHINAI (ACC,FIC,FIR,UIR) : military exercise. ISTANBUL/ATATURK : capacity. NATO 60th Anniversary Plan ED** scenarios not causing many problems

Saturday 04 April 2009

FRANKFURT/MAIN : REGs fog. GENEVE : staffing. ISTANBUL/ATATURK : capacity reduction

Sunday 05 April 2009

NICOSIA (ACC/FIC) : REGs E2S and WN sectors. ISTANBUL/ATATURK, BUDAPEST/FERIHEGY : ARR due to single RWY OPS. FIR-WIEN : S, N and E due to bad weather. MUNCHEN ACC/FIC : sectors due to TS

Monday 06 April 2009

FRANKFURT/MAIN, STUTTGART : low visibility. MUNCHEN, MALAGA : fog. LONDON/CITY : reduced rate due to check- in system failure affecting the airport operations. STUTTGART Strike at TWR

Tuesday 07 April 2009

NICOSIA (ACC/FIC) : E: ATC Capacity

Wednesday 08 April 2009

NAPOLI/CAPODICHINO : airshow. PISA (MIL) : weather. NICOSIA (ACC/FIC) WN. MADRID/TORREJON : ATC Capacity. ISTANBUL/ATATURK : aerodrome capacity

Thursday 09 April 2009

NAPOLI/CAPODICHINO : military activity. FIR-WIEN : staffing and capacity

Friday 10 April 2009

CANARIAS ACC/FIC : staffing

Saturday 11 April 2009

LONDON GATWICK, VENEZIA/TESSERA : low visibility. CANARIAS ACC/FIC, GENEVE : staffing

Sunday 12 April 2009

LONDON HEATHROW, LONDON/CITY : low visibility. SHARM EL SHEIKH, HURGHADA : aerodrome capacity. CANARIAS ACC/FIC : TMA APPR. NICOSIA (ACC/FIC) : ATC Capacity. ISTANBUL/ATATURK : aerodrome capacity. NICOSIA (ACC/FIC) : E, E2S capacity

Monday 13 April 2009

Paris,London & Amsterdam low visibility and fog. MADRID/TORREJON : ARR and DEP: aerodrome capacity.

Tuesday 14 April 2009

Copenhagen, Amsterdam low visibility. MADRID/BARAJAS : ARR was regulated and experienced heavy overload due to long hauls coming in between 08h00 and 09h00. MADRID/TORREJON : DEP: aerodrome capacity

Wednesday 15 April 2009

MADRID/TORREJON : DEP and ARR: aerodrome capacity. MADRID/BARAJAS : sector WWS: staffing. NICOSIA (ACC/FIC) : ATC Capacity regulations FMP mainly caused by the demand in WN Sector. LONDON HEATHROW, LONDON/CITY : thunderstorms in afternoon. STAVANGER/SOLA : TMA: staffing. KOLN/BONN : staffing problems during the evening

Thursday 16 April 2009

MADRID/TORREJON : DEP and ARR: aerodrome capacity. NICE-COTE D AZUR : ARR: low visibility and heavy rain. ISTANBUL/ATATURK : ARR strong winds. NICOSIA (ACC/FIC) : ATC Capacity regulations in FMP mainly caused by the demand in WN and E + S Sectors. LONDON HEATHROW : TMA via LAM: thunderstorms. GENEVE : ARR: staffing

Friday 17 April 2009

BRUSSELS-NATIONAL, AMSTERDAM/SCHIPHOL, FRANKFURT/MAIN : weather problems. MADRID ACC/FIC : Capacity problems in CJL, PAU, TLU sectors. NICOSIA (ACC/FIC) : WN and ES REG at the beginning of the afternoon

Saturday 18 April 2009

FRANKFURT/MAIN : ARR: weather. MADRID/BARAJAS : single RWY OPS. MADRID ACC/FIC : ASI, DOM, TLU, BLI sectors: capacity problems. AIX-EN-PROVENCE (MARSEILLE FIC/ACC/UAC/COM) : AB, F, W, D sectors: frequency problems. Budapest: single RWY OPS. ISTANBUL/ATATURK : ARR: strong wind. NICOSIA (ACC/FIC) : regulating E2S, E1 and overlapping with WN

Sunday 19 April 2009

NICOSIA (ACC/FIC) : E2S sector: ATC Capacity. ISTANBUL/ATATURK : ARR: RWY configuration problems caused by wind direction. FIR-WIEN : SOU sector: ATC Capacity. VILLAFRANCA (MIL.) : global ? ATC Capacity

Monday 20 April 2009

LONDON HEATHROW : ARR rate reduction. ROMA/CIAMPINO : low visibility

Tuesday 21 April 2009

AMSTERDAM/SCHIPHOL : early morning affected by fog. PISA (MIL) : radar maintenance

Wednesday 22 April 2009

RHEIN UAC FUL. WARSZAWA/ACC JR: staffing. ISTANBUL/ATATURK ARR: aerodrome capacity. EDG1ADL MIL activity. MADRID/BARAJAS : ARR. BUDAPEST/FERIHEGY : ARR other. MANCHESTER ARR?s, bad weather. LONDON HEATHROW, PARIS-CHARLES DE GAULLE : ARR?s, ATC capacity. NICOSIA (ACC/FIC) SWN,. BRATISLAVA/FIR U36 ATC capacity

Thursday 23 April 2009

MUNCHEN : ARR thunderstorms. SHARM EL SHEIKH : ARR: A/D Capacity. NICOSIA (ACC/FIC) : ATC capacity. FIR-WIEN : south sector. FRANKFURT/MAIN : reduced rate due to strong winds. PISA (MIL) : radar maintenance

Friday 24 April 2009

MUNCHEN : ARR reduced rates due to thunderstorm activity. ZURICH FLUGHAFEN : wind and RWY CONF have caused capacity reduction. BUDAPEST/FERIHEGY : single RWY operations. BRUSSELS-NATIONAL : single RWY OPS. GENEVE : aerodrome capacity. STAVANGER/SOLA : TMA: staff shortages. RHEIN UAC : KUL and FBM sectors: staffing issues

Saturday 25 April 2009

ISTANBUL/ATATURK : single RWY OPS. MADRID/BARAJAS : radar problems. MADRID ACC/FIC : DOM, BLI and TLU sectors due ATC capacity

Sunday 26 April 2009

RODOS/DIAGORAS : A/D capacity. ISTANBUL/ATATURK : aerodrome capacity

Monday 27 April 2009

PALERMO/PUNTA RAISI : bad weather. ISTANBUL/ATATURK : aerodrome capacity. MARSEILLE-PROVENCE : reduced rate due to ILS problems. STUTTGART, LONDON HEATHROW, BRUSSELS-NATIONAL : strong winds. IRAKLION/NIKOS KAZANTZAKIS : ATC capacity

Tuesday 28 April 2009

FRANKFURT/MAIN, LONDON GATWICK, LONDON GATWICK : bad weather. ISTANBUL/ATATURK : aerodrome capacity. MADRID ACC/FIC : TZI sector, due to staffing. LONDON HEATHROW : inbound, due to back log from that morning weather problems. ISTANBUL/ATATURK : RWY configuration (caused by surface wind). PARIS-CHARLES DE GAULLE : thunderstorms. STAVANGER/SOLA : ATC staffing problems

Wednesday 29 April 2009

LONDON HEATHROW : inbound, early morning due to low visibility. LONDON/CITY : low visibility. MANCHESTER : fog (350m) forecast, high delays but regulation was cancelled when fog did not materialise. BRUSSELS-NATIONAL : RWYs 25L and 20 blocked due to an emergency (aircraft with landing gear problems). PISA (MIL) : strong winds. HAMBURG : ARR, aerodrome capacity. PARIS/ORLY : bad weather. CANNES-MANDELIEU : aerodrome capacity. TAMPERE (ACC/RCC) : ACC unexpected industrial action

Thursday 30 April 2009

CANNES-MANDELIEU, RODOS/DIAGORAS : aerodrome capacity. ISTANBUL/ATATURK : RWY configuration (wind). SHARM EL SHEIKH : aerodrome capacity