

Air Traffic Flow & Capacity Management

CFMU ATFCM Monthly Summary

May 2009



EUROCONTROL

EUROPEAN ORGANISATION FOR THE SAFETY OF AIR NAVIGATION

Copyright:

© European Organisation for the Safety of Air Navigation EUROCONTROL; 2009.

Disclaimer:

This document is published by EUROCONTROL in the interests of exchange of information. It may be copied in whole or in part, providing that the copyright notice and disclaimer are included. The information contained in this document may not be modified without prior written permission from EUROCONTROL. EUROCONTROL makes no warranty, either implied or express, for the information contained in this document, neither does it assume any legal liability or responsibility for the accuracy, completeness or usefulness of this information.

Contact Details:

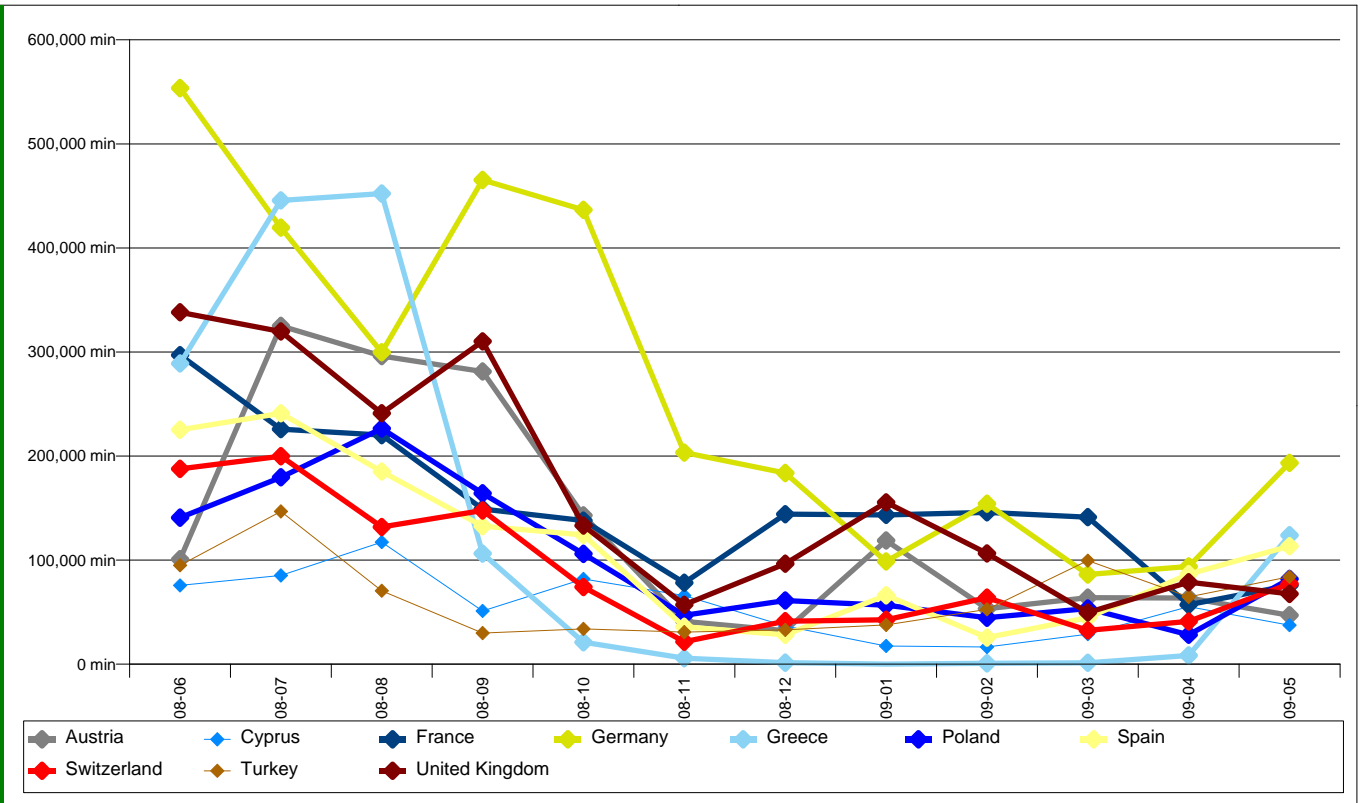
Central Flow Management Unit
User Relations and Development Bureau
Rue de la Fusée, 96
B - 1130 Brussels (BELGIUM)

Telephone: 00 32 (0)2 729.97.31

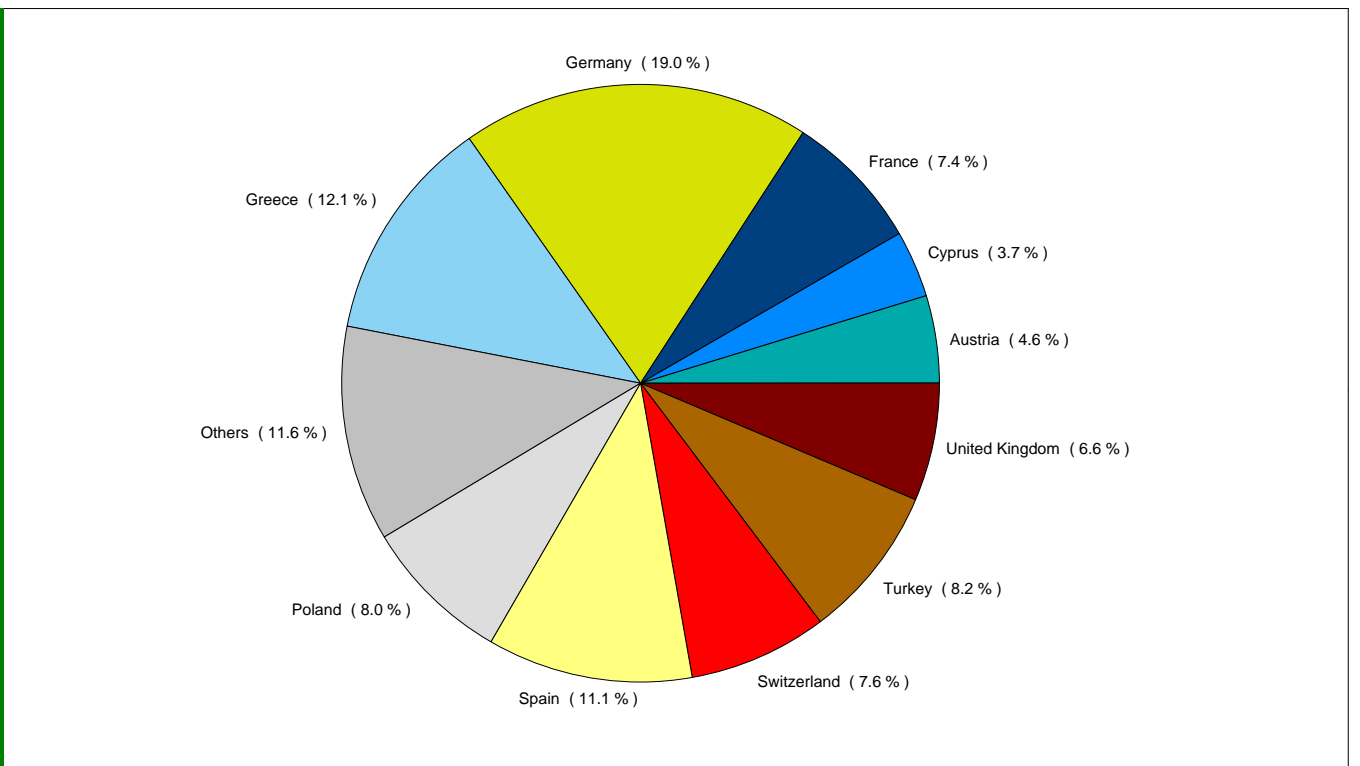
Fax: 00 32 (0)2 729.91.89

E-mail Address: <mailto:cfmu.customersupport@eurocontrol.int> (CFMU Customer Support)

ATFM DELAYS PER STATE

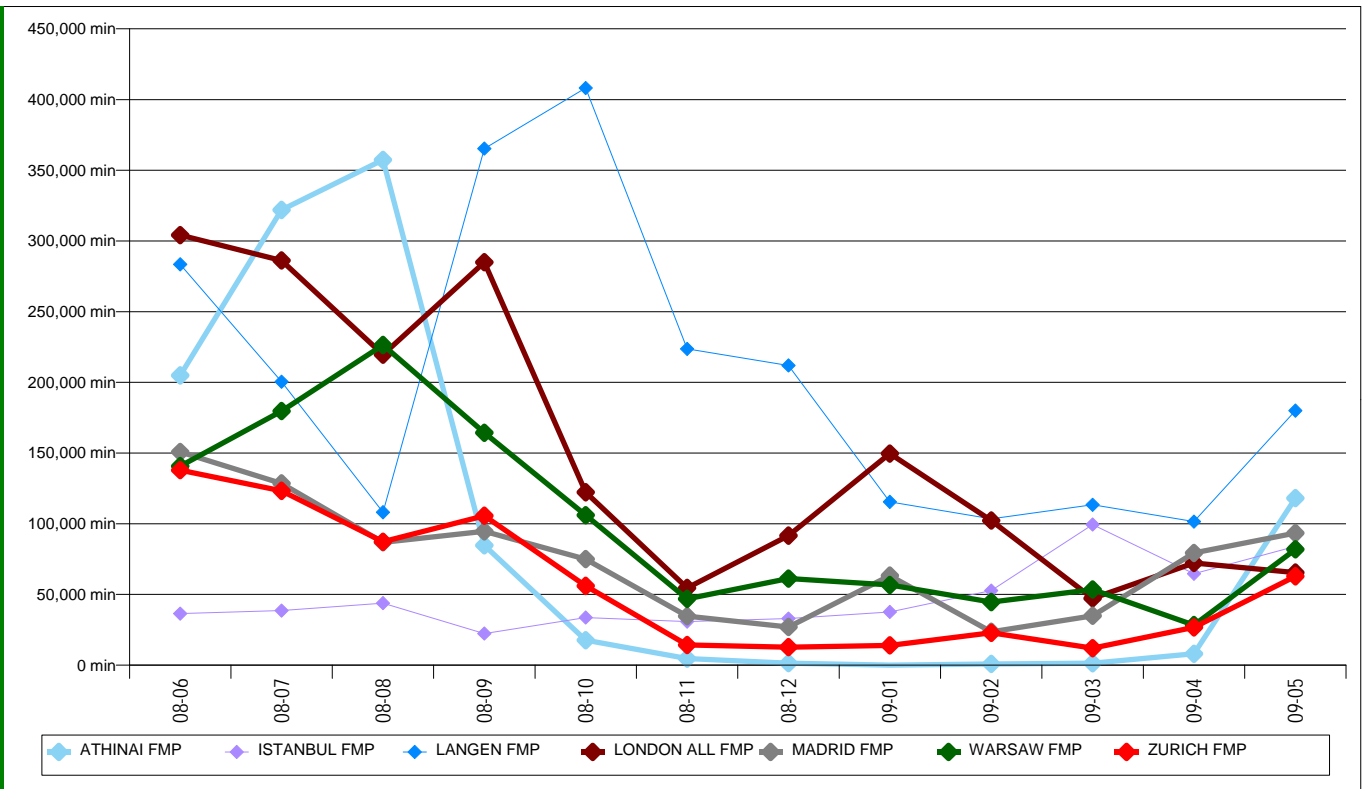


MAY 2009 ATFM DELAY DISTRIBUTION PER STATE

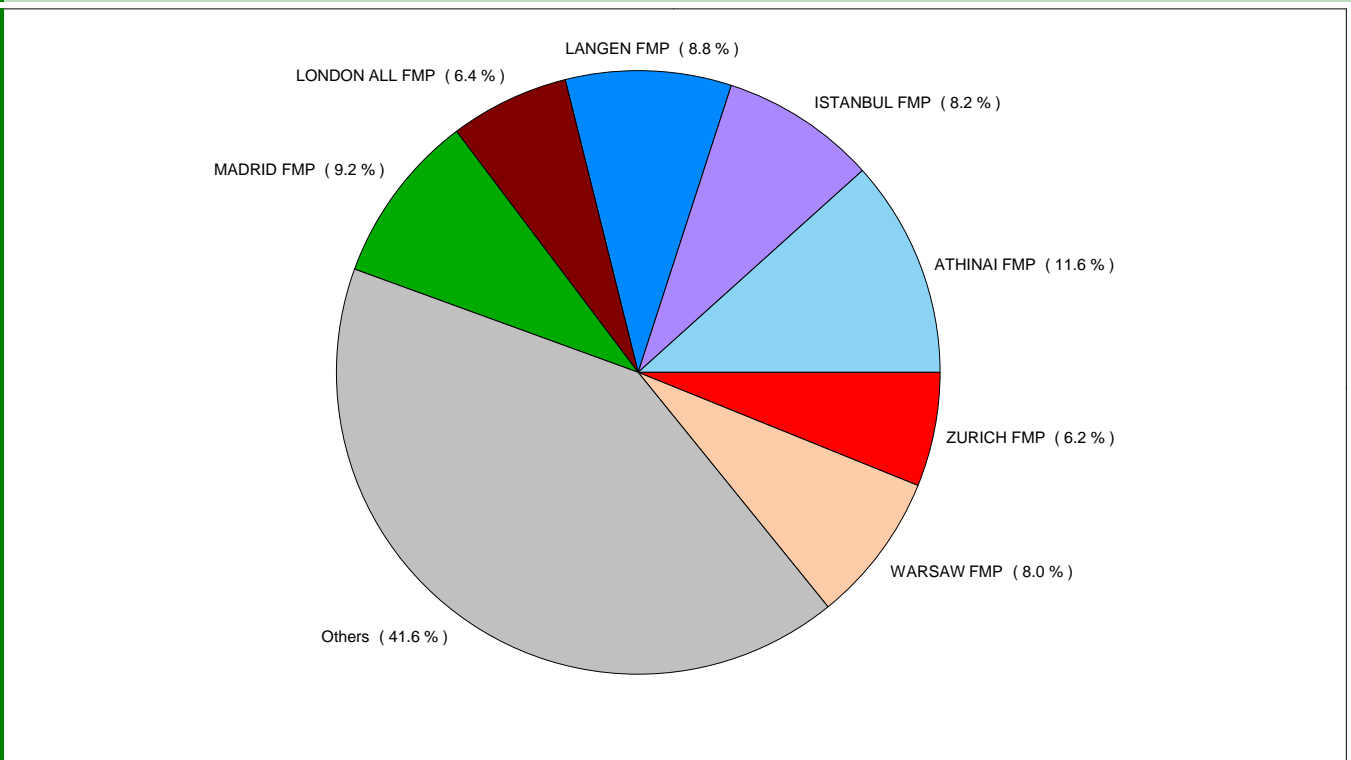


! The graphs presented in this page only display the countries where the current monthly delay is higher than 3% of the current total monthly delay

ATFM DELAYS PER FMP AREA

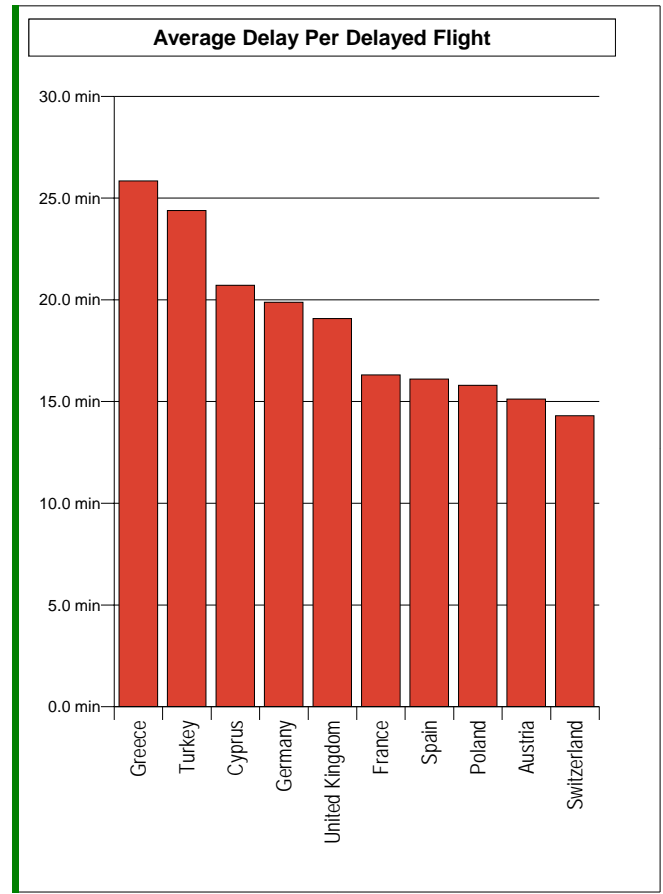
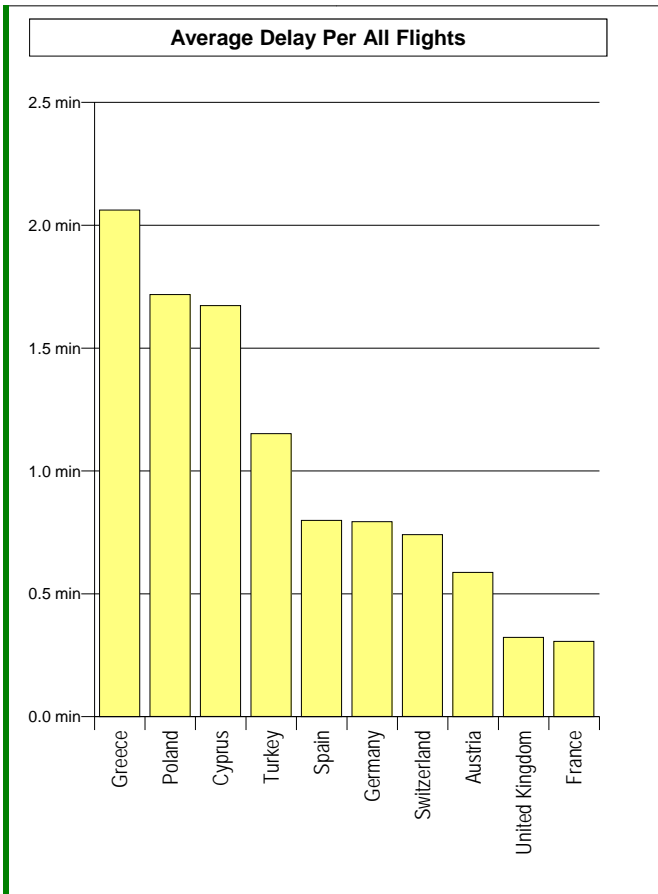


MAY 2009 ATFM DELAY DISTRIBUTION PER FMP

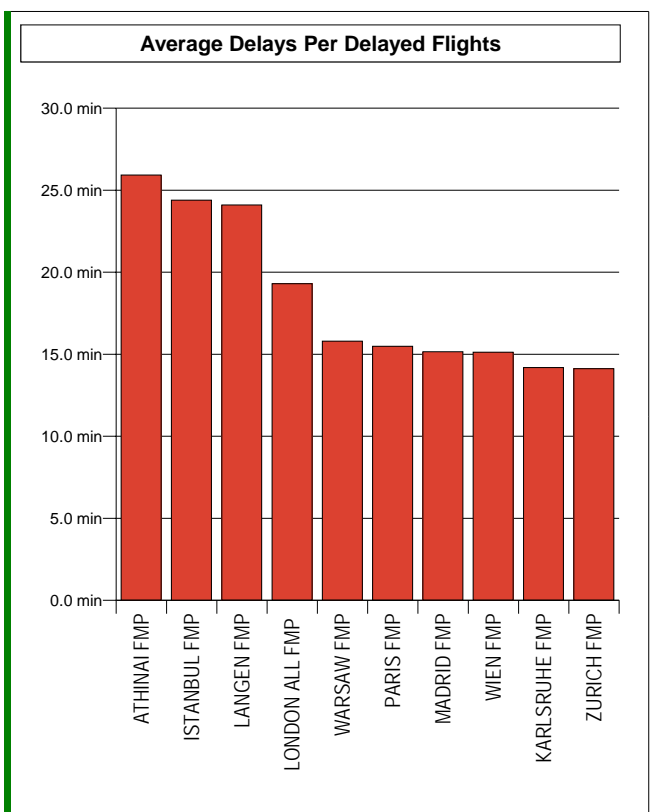
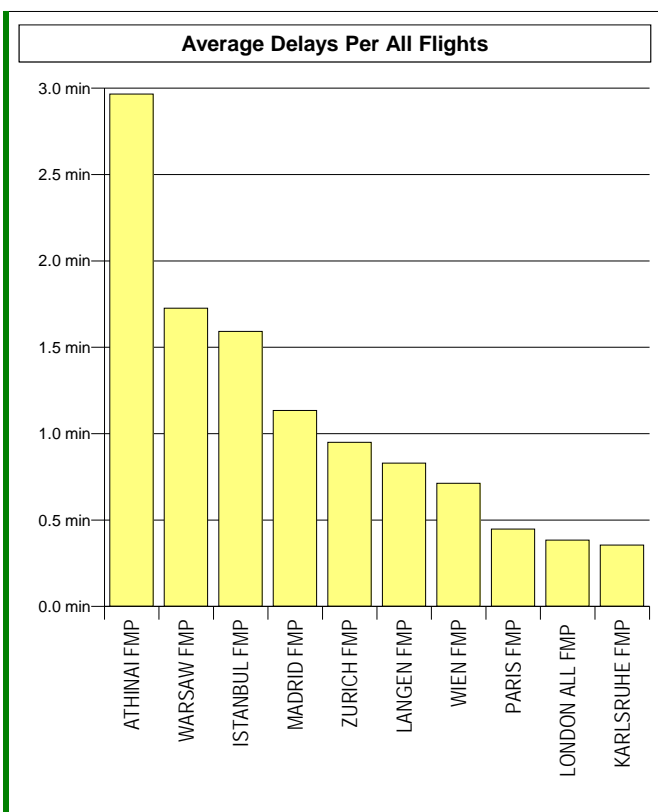


! The graphs presented in this page only display the FMPs where the current monthly delay is higher than 5% of the current total monthly delay

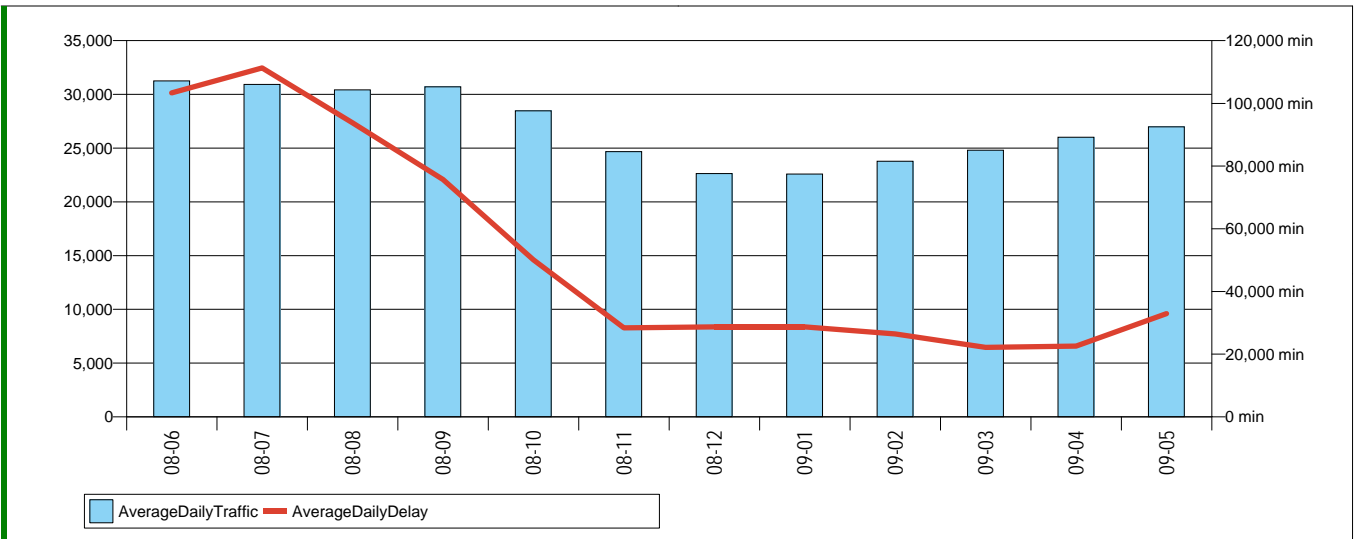
DISTRIBUTION OF THE AVERAGE ATFM DELAYS IN THE STATES (10 MOST DELAYED)



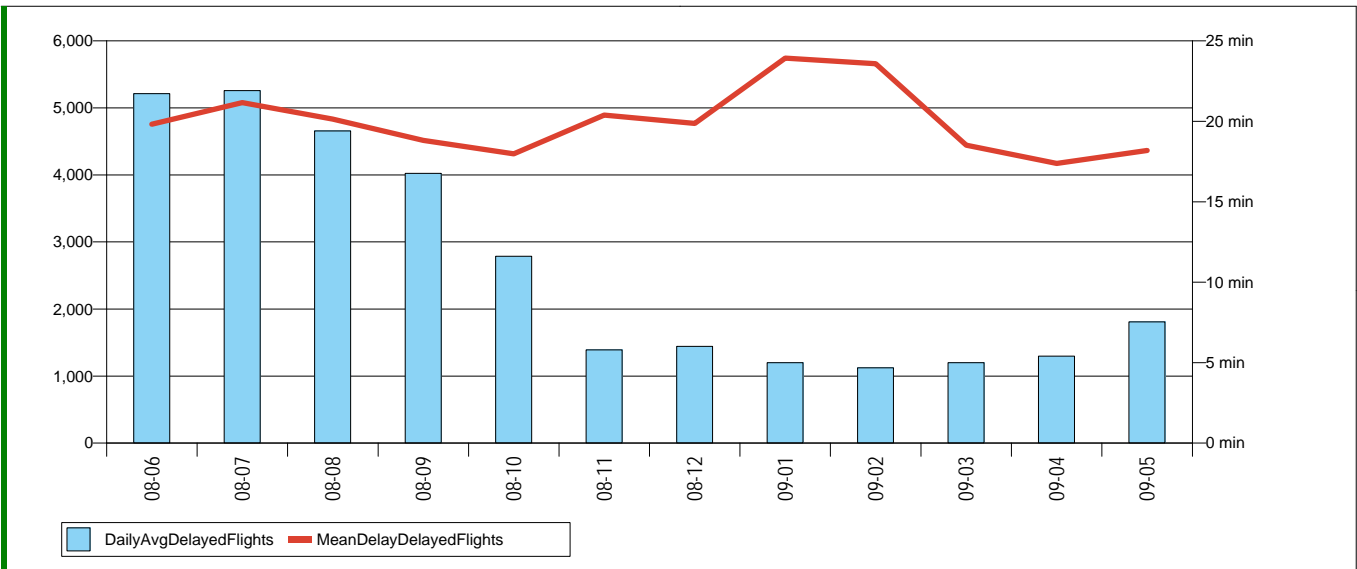
DISTRIBUTION OF THE AVERAGE ATFM DELAYS IN THE FMPs (10 MOST DELAYED)



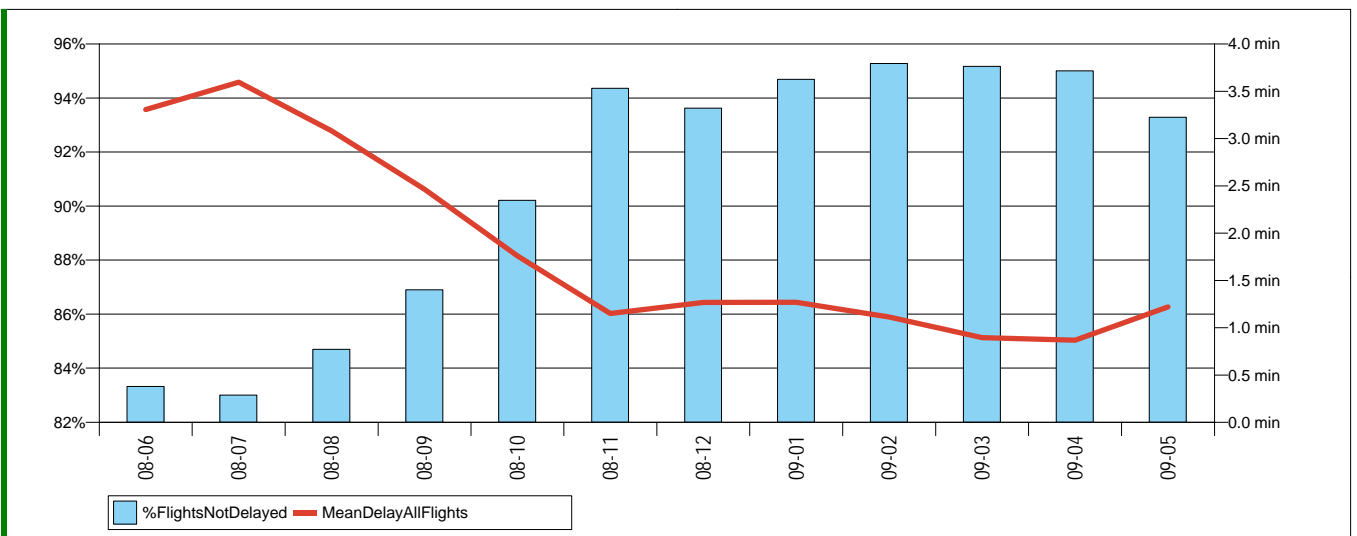
DAILY ATFM DATA - MONTHLY TREND IN TRAFFIC DEMAND AND DELAYS



DAILY ATFM DATA - MONTHLY TREND IN DELAYED FLIGHTS



DAILY ATFM DATA - TRAFFIC NOT DELAYED BY ATFM AND MEAN DELAY FOR ALL FLIGHTS



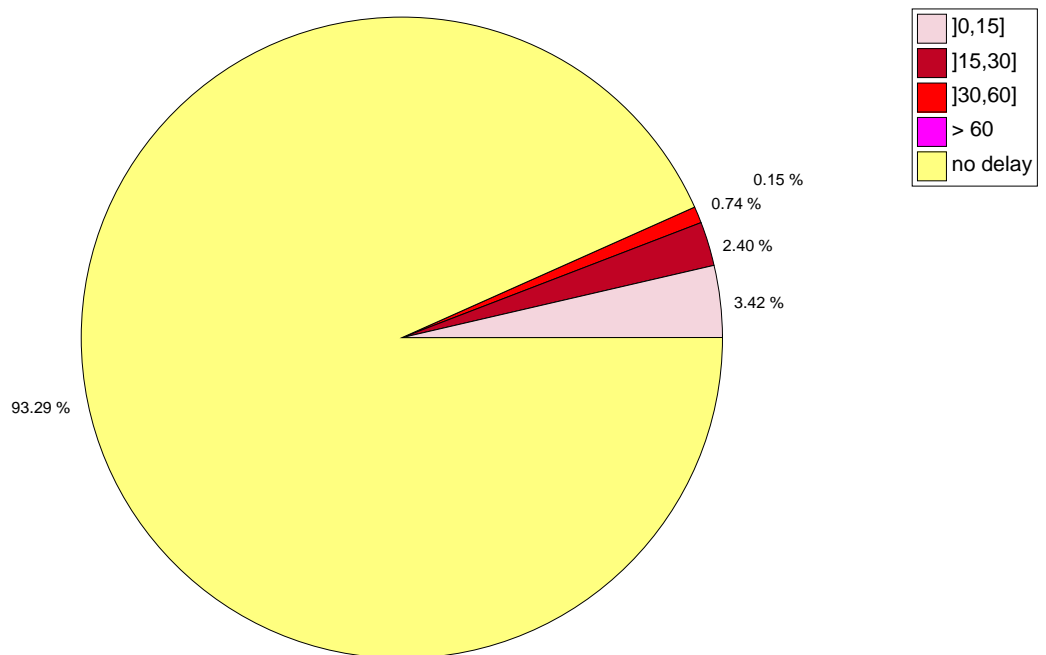
AVERAGE DAILY DATA

| MONTH | DAILY TRAFFIC DEMAND | DAILY REGULATED FLIGHTS | DAILY DELAYED FLIGHTS | DAILY ATFM DELAY | MEAN DELAY FOR DELAYED FLIGHTS | MEAN DELAY FOR REGULATED FLIGHTS | MEAN DELAY FOR ALL FLIGHTS |
|-------|----------------------|-------------------------|-----------------------|------------------|--------------------------------|----------------------------------|----------------------------|
| 08-06 | 31255 | 8617 | 5214 | 103342 | 19.8 | 12.0 | 3.3 |
| 08-07 | 30940 | 8455 | 5260 | 111295 | 21.2 | 13.2 | 3.6 |
| 08-08 | 30428 | 7553 | 4656 | 93772 | 20.1 | 12.4 | 3.1 |
| 08-09 | 30718 | 6868 | 4025 | 75722 | 18.8 | 11.0 | 2.5 |
| 08-10 | 28465 | 4990 | 2786 | 50076 | 18.0 | 10.0 | 1.8 |
| 08-11 | 24689 | 2459 | 1392 | 28385 | 20.4 | 11.5 | 1.1 |
| 08-12 | 22635 | 2470 | 1443 | 28690 | 19.9 | 11.6 | 1.3 |
| 09-01 | 22587 | 1956 | 1199 | 28689 | 23.9 | 14.7 | 1.3 |
| 09-02 | 23779 | 1908 | 1123 | 26486 | 23.6 | 13.9 | 1.1 |
| 09-03 | 24805 | 2158 | 1199 | 22189 | 18.5 | 10.3 | 0.9 |
| 09-04 | 26005 | 2397 | 1299 | 22574 | 17.4 | 9.4 | 0.9 |
| 09-05 | 26981 | 3281 | 1810 | 32925 | 18.2 | 10.0 | 1.2 |

TOTAL VALUES

| MONTH | MONTHLY TRAFFIC DEMAND | MONTHLY REGULATED FLIGHTS | MONTHLY DELAYED FLIGHTS | MONTHLY ATFM DELAY | MEAN DELAY FOR DELAYED FLIGHTS | MEAN DELAY FOR REGULATED FLIGHTS | MEAN DELAY FOR ALL FLIGHTS |
|-------|------------------------|---------------------------|-------------------------|--------------------|--------------------------------|----------------------------------|----------------------------|
| 08-06 | 937663 | 258520 | 156405 | 3100271 | 19.8 | 12.0 | 3.3 |
| 08-07 | 959138 | 262109 | 163051 | 3450145 | 21.2 | 13.2 | 3.6 |
| 08-08 | 943257 | 234147 | 144322 | 2906940 | 20.1 | 12.4 | 3.1 |
| 08-09 | 921548 | 206046 | 120735 | 2271667 | 18.8 | 11.0 | 2.5 |
| 08-10 | 882428 | 154678 | 86365 | 1552350 | 18.0 | 10.0 | 1.8 |
| 08-11 | 740655 | 73759 | 41766 | 851550 | 20.4 | 11.5 | 1.1 |
| 08-12 | 701700 | 76583 | 44746 | 889386 | 19.9 | 11.6 | 1.3 |
| 09-01 | 700206 | 60649 | 37171 | 889372 | 23.9 | 14.7 | 1.3 |
| 09-02 | 665821 | 53430 | 31452 | 741621 | 23.6 | 13.9 | 1.1 |
| 09-03 | 768944 | 66888 | 37155 | 687851 | 18.5 | 10.3 | 0.9 |
| 09-04 | 780158 | 71903 | 38955 | 677223 | 17.4 | 9.4 | 0.9 |
| 09-05 | 836412 | 101716 | 56120 | 1020689 | 18.2 | 10.0 | 1.2 |

DISTRIBUTION OF TRAFFIC ACCORDING TO ATFM DELAY DURATION



SPECIAL EVENTS

Friday 01 May 2009

FRANKFURT/MAIN : fog. TENERIFE NORTE/LOS RODEOS : staffing problems. ISTANBUL/ATATURK : aerodrome capacity

Saturday 02 May 2009

ISTANBUL/ATATURK : RWY configuration

Sunday 03 May 2009

TIRANA FIR/UIR/FIC/ACC/SAR, NICOSIA (ACC/FIC) : ATC capacity. ISTANBUL/ATATURK : aerodrome capacity. IRAKLION/NIKOS KAZANTZAKIS : aerodrome capacity. RODOS/DIAGORAS : WIP

Monday 04 May 2009

single RWY OPS. IRAKLION/NIKOS KAZANTZAKIS : aerodrome capacity. DUSSELDORF : staffing

Tuesday 05 May 2009

LONDON HEATHROW : strong winds. TOULOUSE/BLAGNAC : WIP. IRAKLION/NIKOS KAZANTZAKIS, CANNES-MANDELIEU, MADRID/BARAJAS : aerodrome capacity. PISA (MIL) : radar maintenance. STAVANGER/SOLA : TMA and RHEIN UAC : FFM staffing

Wednesday 06 May 2009

LONDON HEATHROW, FRANKFURT/MAIN : strong winds. KOS/IPPOKRATIS, RODOS/DIAGORAS : aerodrome capacity. PISA (MIL) : reduced capacity due telephone failure. ISTANBUL/ATATURK : wind causing single RWY OPS. NICOSIA (ACC/FIC) : staff shortages. KOBENHAVN/KASTRUP : cross wind. HAMBURG : single RWY ops. MADRID ACC/FIC : staff shortages

Thursday 07 May 2009

WARSZAWA/OKECIE, HAMBURG : single RWY OPS. LONDON HEATHROW : strong winds. RODOS/DIAGORAS : WIP on taxiway. CHANIA/SOUDA : capacity shortfalls. BERN-BELP : TMA new procedure. ISTANBUL/ATATURK : single RWY OPS

Friday 08 May 2009

CATANIA : airport closure due to disabled aircraft. LONDON HEATHROW : strong winds. WIEN-SCHWECHAT : requested to be regulated at 99/60 (due to management request). LONDON HEATHROW : strong wind afternoon.. MUNCHEN : forecast CB. HAMBURG : staffing. KOLN/BONN : staffing

Saturday 09 May 2009

LONDON GATWICK : low visibility. ISTANBUL/ATATURK : wind causing single RWY OPS. HAMBURG : air show. RODOS/DIAGORAS : high demand. FIR-WIEN : capacity shortfalls

Sunday 10 May 2009

FRANKFURT/MAIN : low visibility during early morning. ISTANBUL/ATATURK : wind causing single RWY OPS. RODOS/DIAGORAS : WIP on the taxiway. HAMBURG : special event Harborfest.. PARIS-CHARLES DE GAULLE, PARIS/ORLY : thunderstorm activity. Langen HERSFELD sector due to capacity

Monday 11 May 2009

LONDON HEATHROW, : ARR wind. IRAKLION/NIKOS KAZANTZAKIS : ARR WIP. FRANKFURT/MAIN : low ceiling. MUNCHEN : thunderstorms. ISTANBUL/ATATURK : southerly RWY configuration. LARNAKA/INTL : capacity. STAVANGER/SOLA : staffing. MADRID/BARAJAS : southerly RWY CONF. MADRID/TORREJON : ARR and DEP LEMD knock on effect. WARSZAWA/ACC : (T and C sectors) staffing

Tuesday 12 May 2009

FRANKFURT/MAIN : strong wind on final approach. ISTANBUL/ATATURK : southerly RWY configuration. ATHINAI/ELEFThERIOS VENIZELOS : construction works. BRUSSELS-NATIONAL : wind. FIR-WIEN : (high level sectors) due to expected thunderstorms

Wednesday 13 May 2009

FRANKFURT/MAIN : low ceiling. BRUSSELS-NATIONAL : ARR wind. HAMBURG : RWY CONF. MUNCHEN : wind. ISTANBUL/ATATURK : RWY CONF. ATHINAI/ELEFThERIOS VENIZELOS : WIP. BRUSSELS-NATIONAL : expected strong winds. MADRID/TORREJON, MADRID/BARAJAS : southerly runway configuration. STAVANGER/SOLA : TMA staffing. MUNCHEN, PARIS-LE BOURGET : CB activity

Thursday 14 May 2009

LONDON/CITY, PARIS-CHARLES DE GAULLE : low visibility. ATHINAI/ELEFThERIOS VENIZELOS : construction work and the knock on effect of the Greek ATC Strike. ISTANBUL/ATATURK : southerly configuration. DUBLIN : low visibility. BARCELONA : low visibility. NICOSIA (ACC/FIC) : E2S sector ATC Capacity. MADRID/BARAJAS : BLI and TZI sectors staffing. STAVANGER/SOLA : TMA staff shortages. BRUSSELS-NATIONAL : reduced capacity. MUNCHEN : CB activity. NICOSIA (ACC/FIC) : E2S ATC Capacity. MAKEDONIA (ACC,FIC) : RADAR problems

Friday 15 May 2009

LONDON HEATHROW, MUNCHEN, FRANKFURT/MAIN, DUBLIN : low visibility and low ceiling. ATHINAI/ELEFThERIOS VENIZELOS : WIP. DUSSELDORF : approach ATC capacity. MADRID/TORREJON : military activity. HAMBURG : WIP. DUSSELDORF : heavy showers. ISTANBUL/ATATURK : southerly configuration

Saturday 16 May 2009

ATHINAI/ELEFThERIOS VENIZELOS : WIP. ISTANBUL/ATATURK : southerly configuration. PALMA DE MALLORCA : DEP WIP on RWY 24R. MADRID ACC/FIC : DOM, BLI, ZMI, and TLU sectors ATC Capacity. TIRANA FIR/UIR/FIC/ACC/SAR : ATC Capacity.
ATHINAI/ELEFThERIOS VENIZELOS : WIP

Sunday 17 May 2009

RODOS/DIAGORAS, ATHINAI/ELEFThERIOS VENIZELOS : WIP. ISTANBUL/ATATURK : southerly configuration. VILLAFRANCA (MIL.) : CTR staffing. MADRID/TORREJON, MADRID/BARAJAS : RWY configuration. LONDON HEATHROW : ARR strong wind. GENEVE : ARR staffing

Monday 18 May 2009

PARIS/ORLY, RODOS/DIAGORAS, ATHINAI/ELEFThERIOS VENIZELOS : WIP. ZURICH AREA : ATC Capacity. MAKEDONIA (ACC,FIC) : (W sector) RADAR problems. MADRID/TORREJON, MADRID/BARAJAS : RWY CNF. LONDON HEATHROW, LONDON/CITY : strong wind. ARR CB activity

Tuesday 19 May 2009

LONDON ACC (CIVIL), SHANNON ACC/UACC/FIR/UIR, DUBLIN : problems with communications (OLDI lines). ATHINAI/ELEFThERIOS VENIZELOS : WIP. ISTANBUL/ATATURK : aerodrome capacity. MADRID/TORREJON : ATC Capacity. PARIS/ORLY : WIP. ZAGREB ACC/FIR, FIR-WIEN : CB activity

Wednesday 20 May 2009

NICOSIA (ACC/FIC) : (WN sector) ATC Capacity. ATHINAI/ELEFThERIOS VENIZELOS : WIP. VILLAFRANCA (MIL.) : telephone and frequency problems. ISTANBUL/ATATURK : aerodrome capacity. MADRID/TORREJON : ATC Capacity. PARIS/ORLY : WIP. FRANKFURT/MAIN : CB activity

Thursday 21 May 2009

MADRID/BARAJAS : communications problem. WARSZAWA/ACC : staffing problems. FRANKFURT/MAIN : forecast CB activity and strong winds. FARO : low visibility. FRANKFURT/MAIN : thunderstorms. MADRID/BARAJAS : technical problems. FRANKFURT/MAIN ACC/FIC : (FFM and WUR sectors) thunderstorm activity.

Friday 22 May 2009

WARSZAWA/ACC, BRUSSELS-NATIONAL, DEAUVILLE-SAINT-GATIEN : staffing problems. FIR PRAHA : RADAR troubles. CANNES-MANDELIEU : low visibility. PALMA DE MALLORCA : fog. ISTANBUL/ATATURK : aerodrome capacity. FIR-WIEN : CB activities

Saturday 23 May 2009

ZURICH AREA : (M4 sector) ATC Capacity. ZAGREB ACC/FIR : staff shortages. TIRANA FIR/UIR/FIC/ACC/SAR : ATC Capacity

Sunday 24 May 2009

RODOS/DIAGORAS, ZAKINTHOS/DIONISIOS SOLOMOS : aerodrome capacity. ISTANBUL/ATATURK : aerodrome capacity. ZURICH AREA : (M4 sector) ATC Capacity. NICOSIA (ACC/FIC) : (WN sector) ATC Capacity. TIRANA FIR/UIR/FIC/ACC/SAR : frequency problems. AIX-EN-PROVENCE (MARSEILLE FIC/ACC/UAC/COM) : (F2 and M2 sectors) AWAC activity (military). ISTANBUL/ATATURK : aerodrome capacity. AIX-EN-PROVENCE (MARSEILLE FIC/ACC/UAC/COM) : Monaco GP. RODOS/DIAGORAS : aerodrome capacity. PARIS/ORLY : WIP. PARIS-LE BOURGET : staffing. ZURICH FLUGHAFEN : CB activity. NICOSIA (ACC/FIC) : (WN sector) ATC Capacity. TIRANA FIR/UIR/FIC/ACC/SAR : (high) frequency problems. RHEIN UAC : (FUL sector) ATC capacity.

Monday 25 May 2009

STUTTGART : ATC industrial action. MADRID/TORREJON : (ARR & DEP) ATC Capacity. BARCELONA : low visibility. GIRONA : fog. WARSZAWA/OKECIE : single RWY OPS. NICE-COTE D AZUR : residual high demand from Monaco GP and Cannes festival. RHEIN UAC : (SAL sector) staff shortages. MADRID ACC/FIC : (BLI combined sector) ATC Capacity. ZURICH AREA : (M4 sector) ATC Capacity. LONDON ACC (CIVIL) : (LYD sector) thunderstorm activity. LONDON/CITY : bad weather. RHEIN UAC, DUSSELDORF ACC/FIC : thunderstorms. RHEIN UAC : (SAL and FUL sectors) staffing shortages. LONDON ACC (CIVIL) : 14, 15, 17 sectors) thunderstorms

Tuesday 26 May 2009

MUNCHEN, FRANKFURT/MAIN, AMSTERDAM/SCHIPHOL, ZURICH FLUGHAFEN, HAMBURG, KOBENHAVN/KASTRUP : thunderstorm activity. ZURICH AREA : (M2 and M4 sectors) CB activity. LONDON ACC (CIVIL) : (CLW ? combined 13+14 sectors) CB activity. GENEVE : staffing. PARIS/ORLY, TOUSSUS-LE-NOBLE, MARSEILLE-PROVENCE : industrial action.

Wednesday 27 May 2009

KOS/IPPOKRATIS : (ARR) aerodrome capacity. ZURICH AREA : (M4 sector) and LCCC (WN1 sector) ATC Capacity. STAVANGER/SOLA : TMA staffing. DUSSELDORF : (approach) special incident. RODOS/DIAGORAS : (ARR) WIP. ISTANBUL/ATATURK : (ARR) aerodrome capacity. PARIS/ORLY : WIP. BERGEN/FLESLAND : (ARR) new VCS system. ENZV ATC staffing problems.

Thursday 28 May 2009

RODOS/DIAGORAS : (ARR) WIP. CHANIA/SOUDA : (ARR) ATC Capacity. WARSZAWA/ACC : staffing issues. NICOSIA (ACC/FIC) : (E2S & WN1 sectors) RADAR problems. BRUSSELS-NATIONAL : (NWC1) staffing. ZURICH AREA : (M4 sector) ATC Capacity. GENEVE : ATC Capacity. STAVANGER/SOLA : ATC staffing problems. KOBENHAVN/KASTRUP : (ARR) strong wind

Friday 29 May 2009

PARIS/ORLY : WIP of taxiways, combined with fog. DUSSELDORF : TMA ATC capacity. CANNES-MANDELIEU : (ARR) ATC Capacity. FRANKFURT/MAIN : strong winds. ISTANBUL/ATATURK : (ARR) aerodrome capacity

Saturday 30 May 2009

RODOS/DIAGORAS : WIP. ZURICH AREA : (M4 sector) ATC Capacity. FIR-WIEN : ATC Capacity. ATHINAI (ACC,FIC,FIR,UIR) : (MILOS sector) ATC Capacity. MADRID/BARAJAS : ILS calibration. KOS/IPPOKRATIS : (ARR) aerodrome capacity

Sunday 31 May 2009

ISTANBUL/ATATURK : aerodrome capacity. RODOS/DIAGORAS : WIP. ZAKINTHOS/DIONISIOS SOLOMOS : aerodrome capacity. air show