

Air Traffic Flow & Capacity Management

CFMU ATFCM Monthly Summary

July 2009



EUROCONTROL

EUROPEAN ORGANISATION FOR THE SAFETY OF AIR NAVIGATION

Copyright:

© European Organisation for the Safety of Air Navigation EUROCONTROL; 2006.

Disclaimer:

This document is published by EUROCONTROL in the interests of exchange of information. It may be copied in whole or in part, providing that the copyright notice and disclaimer are included. The information contained in this document may not be modified without prior written permission from EUROCONTROL. EUROCONTROL makes no warranty, either implied or express, for the information contained in this document, neither does it assume any legal liability or responsibility for the accuracy, completeness or usefulness of this information.

Contact Details:

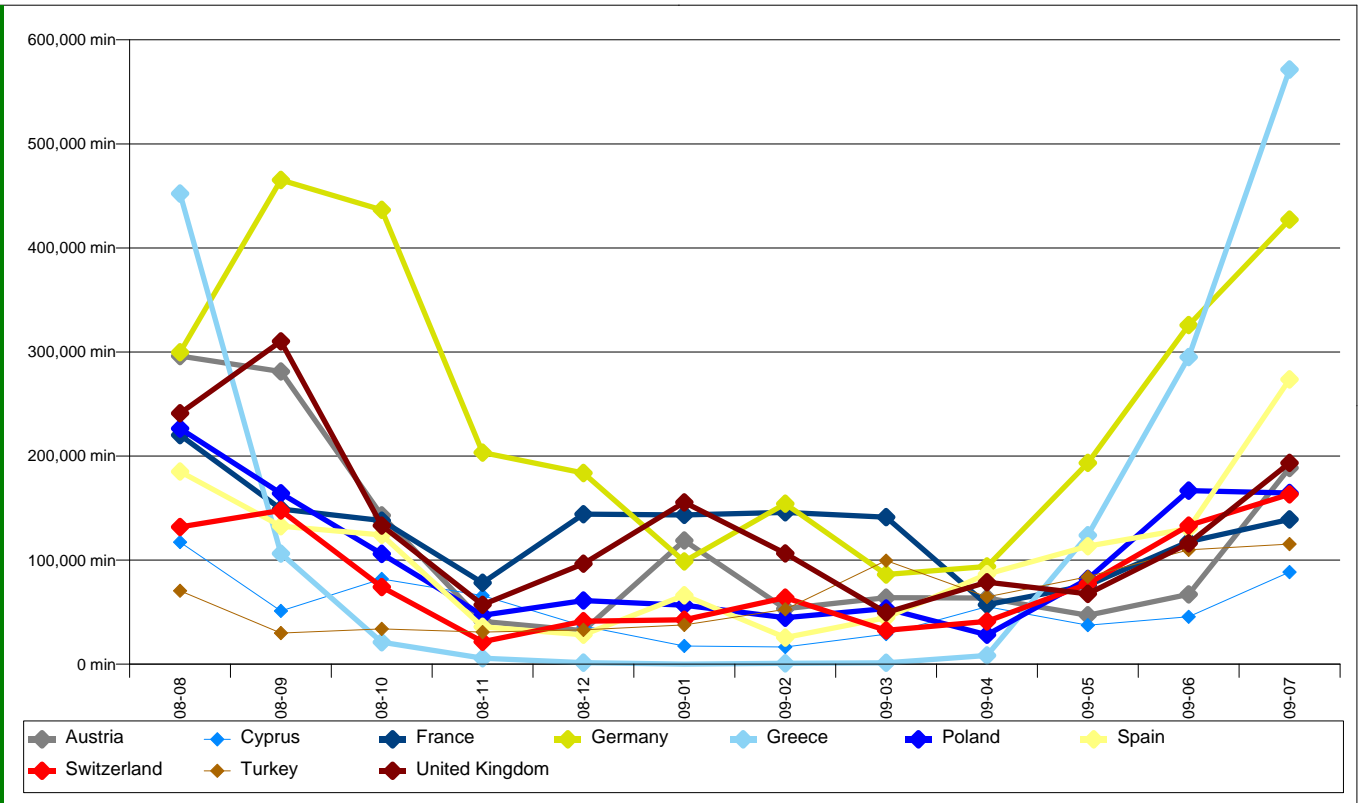
Central Flow Management Unit
User Relations and Development Bureau
Rue de la Fusée, 96
B - 1130 Brussels (BELGIUM)

Telephone: 00 32 (0)2 729.97.31

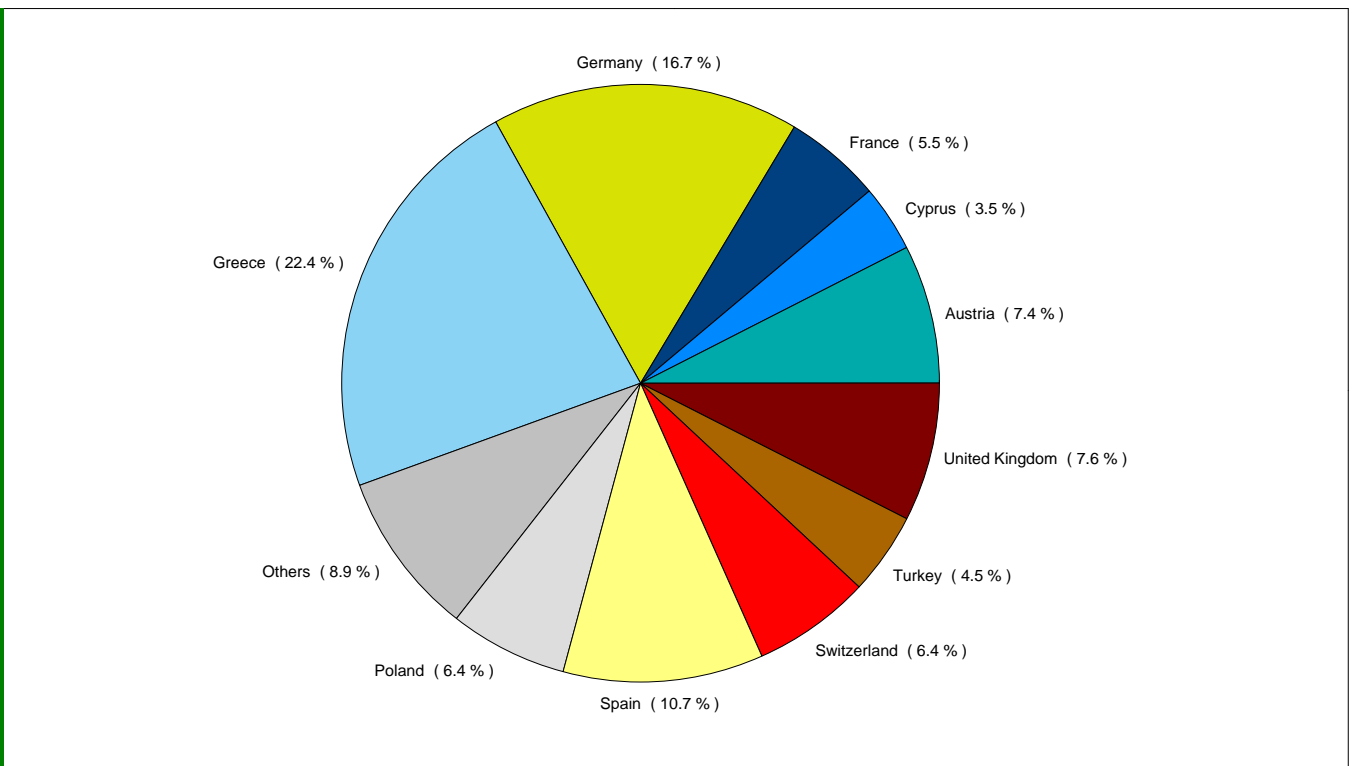
Fax: 00 32 (0)2 729.91.89

E-mail Address: <mailto:cfmu.customersupport@eurocontrol.int> (CFMU Customer Support)

ATFM DELAYS PER STATE

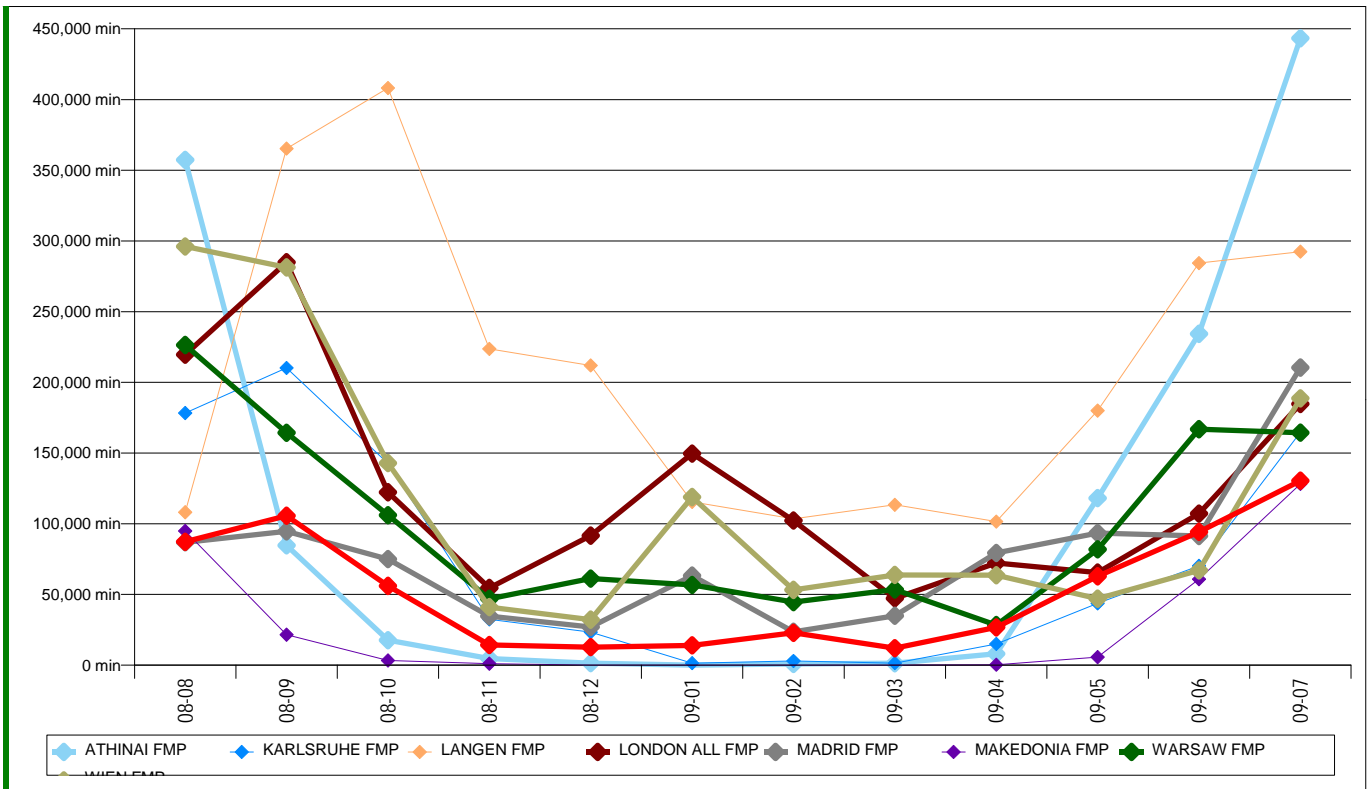


JULY 2009 ATFM DELAY DISTRIBUTION PER STATE

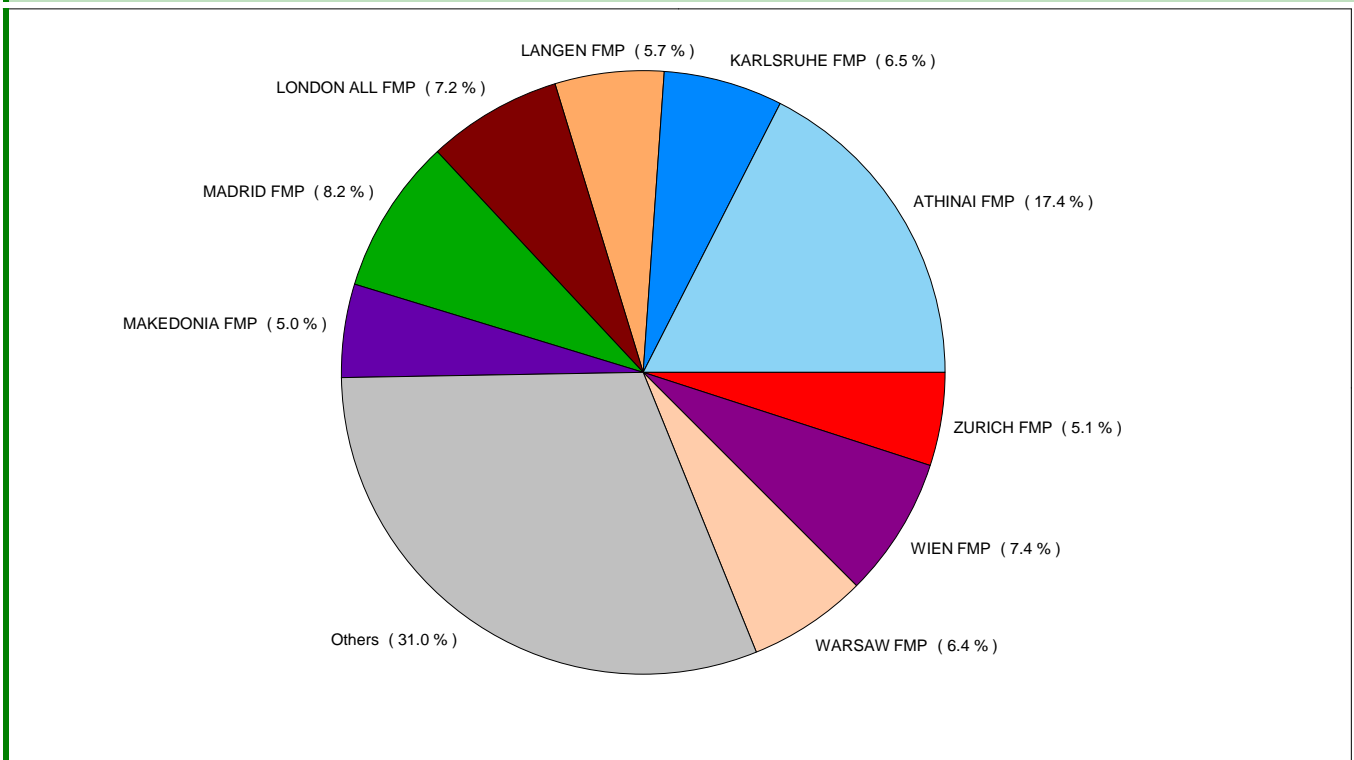


! The graphs presented in this page only display the countries where the current monthly delay is higher than 3% of the current total monthly delay

ATFM DELAYS PER FMP AREA

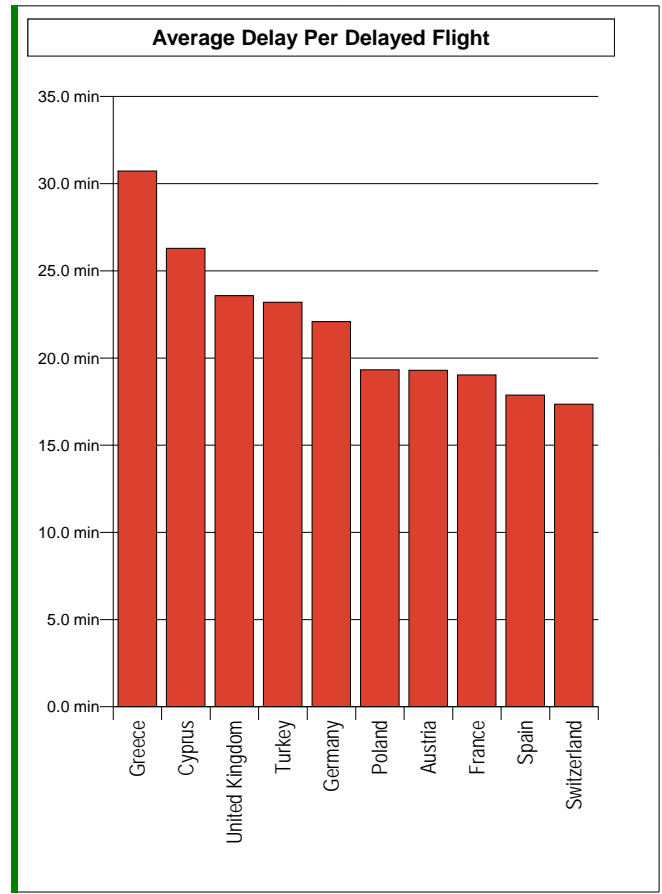
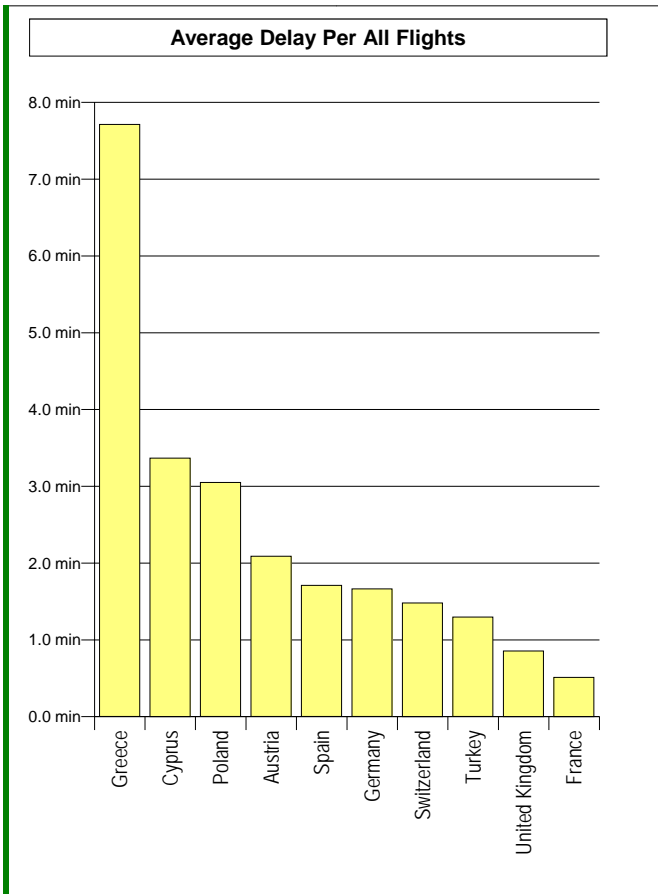


JULY 2009 ATFM DELAY DISTRIBUTION PER FMP

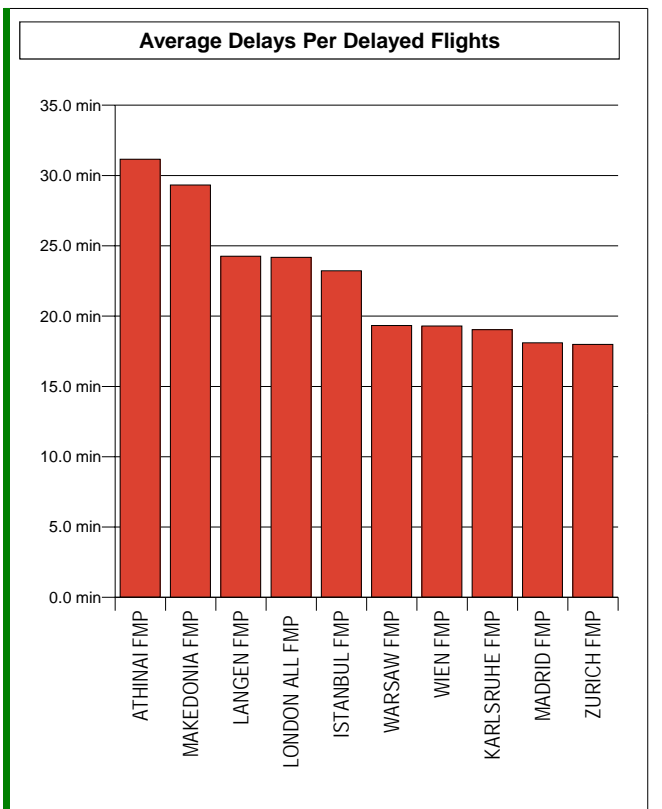
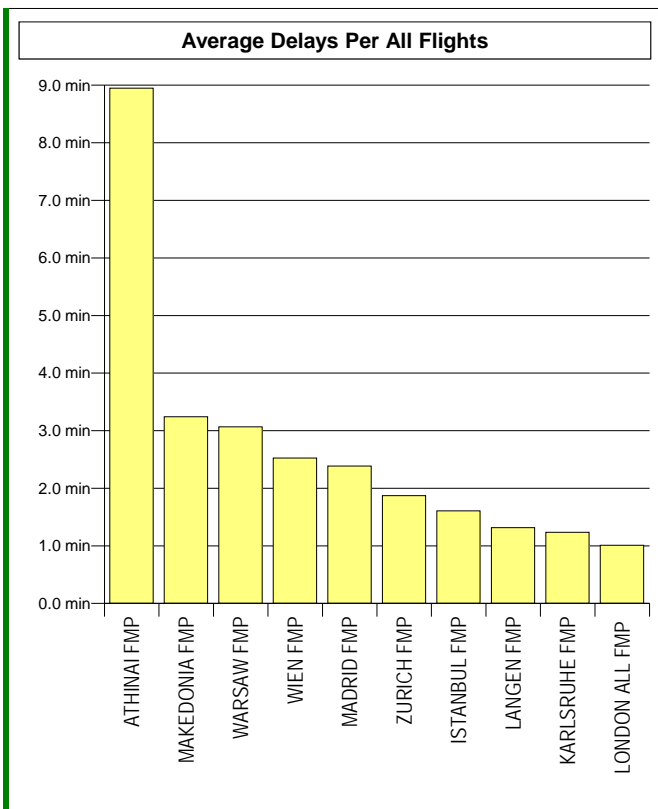


! The graphs presented in this page only display the FMPs where the current monthly delay is higher than 5% of the current total monthly delay

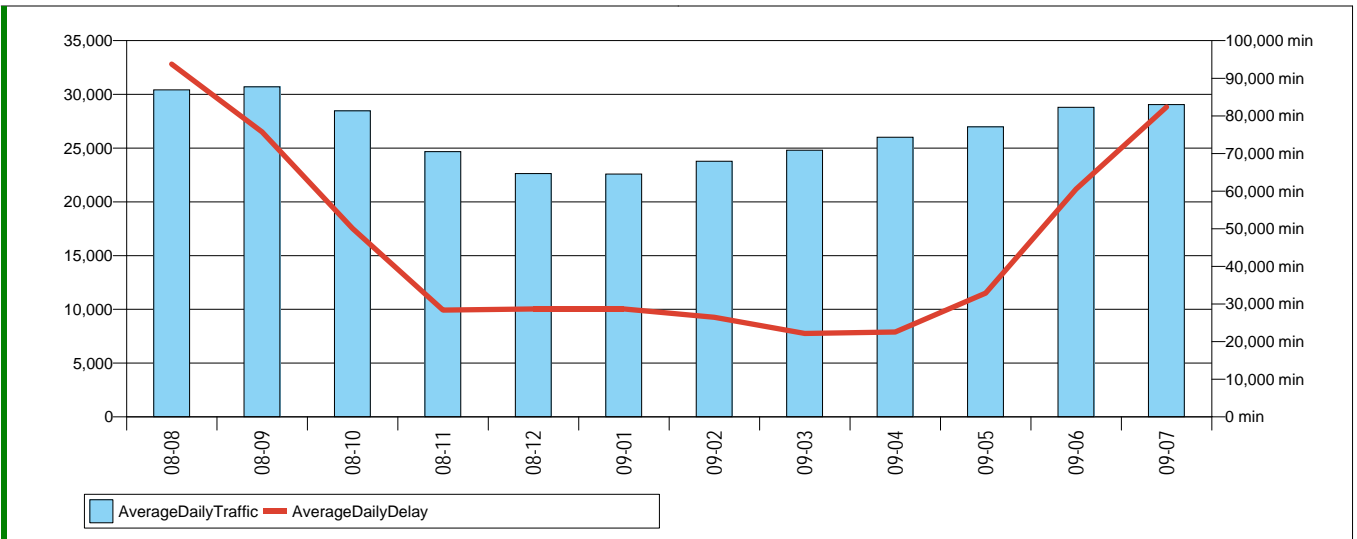
DISTRIBUTION OF THE AVERAGE ATFM DELAYS IN THE STATES (10 MOST DELAYED)



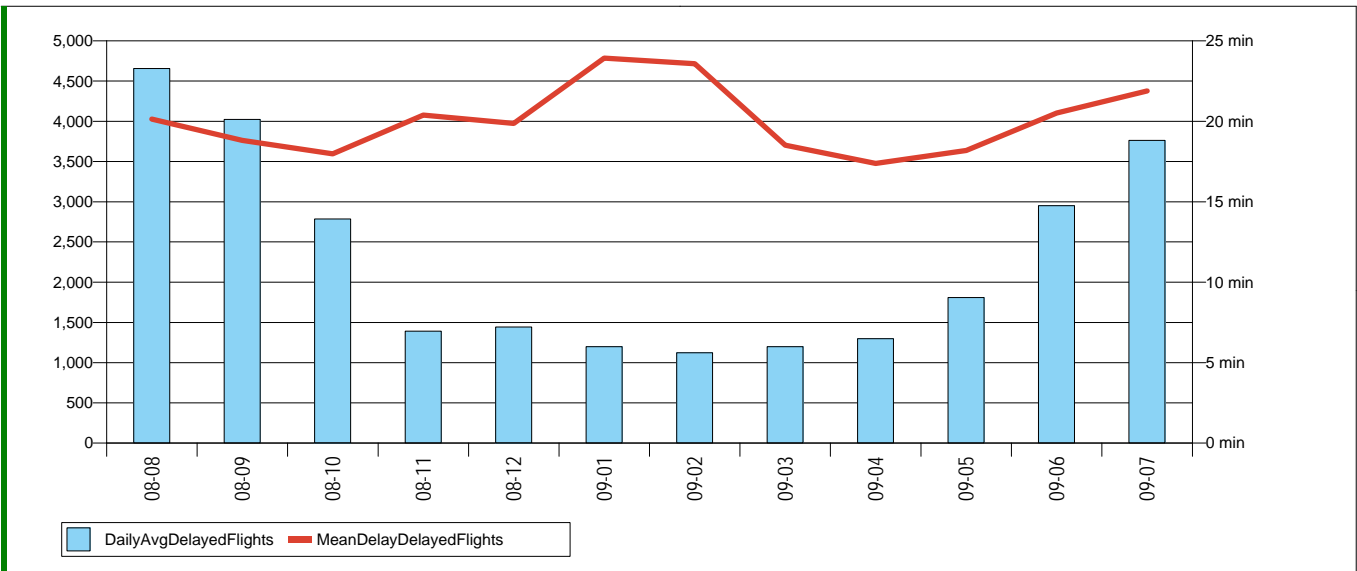
DISTRIBUTION OF THE AVERAGE ATFM DELAYS IN THE FMPs (10 MOST DELAYED)



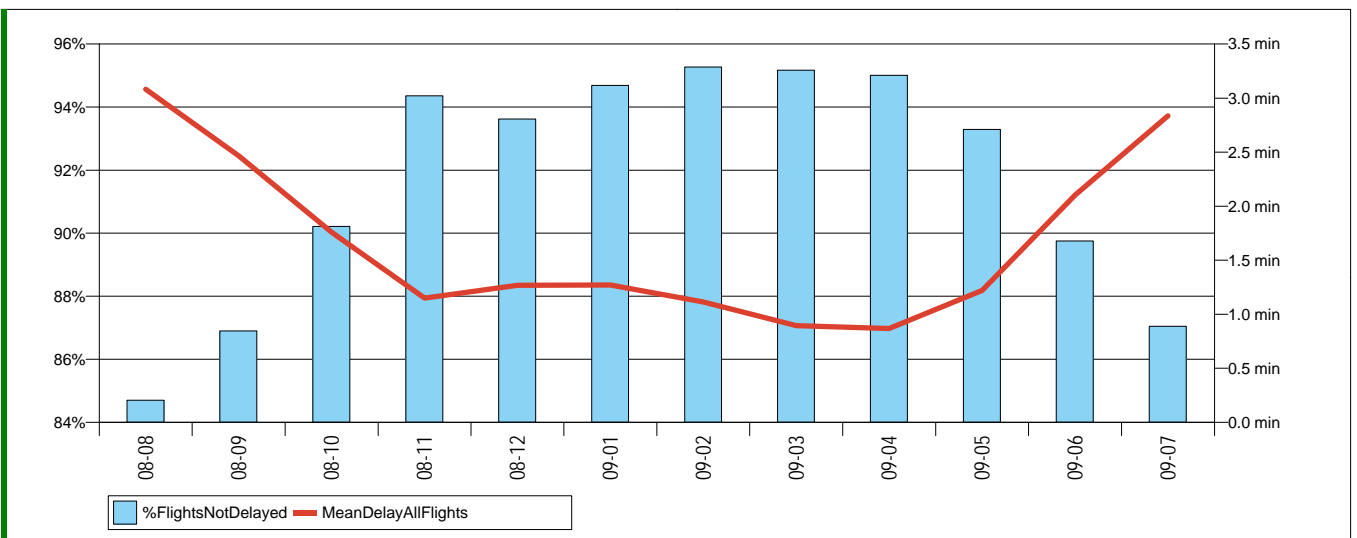
DAILY ATFM DATA - MONTHLY TREND IN TRAFFIC DEMAND AND DELAYS



DAILY ATFM DATA - MONTHLY TREND IN DELAYED FLIGHTS



DAILY ATFM DATA - TRAFFIC NOT DELAYED BY ATFM AND MEAN DELAY FOR ALL FLIGHTS



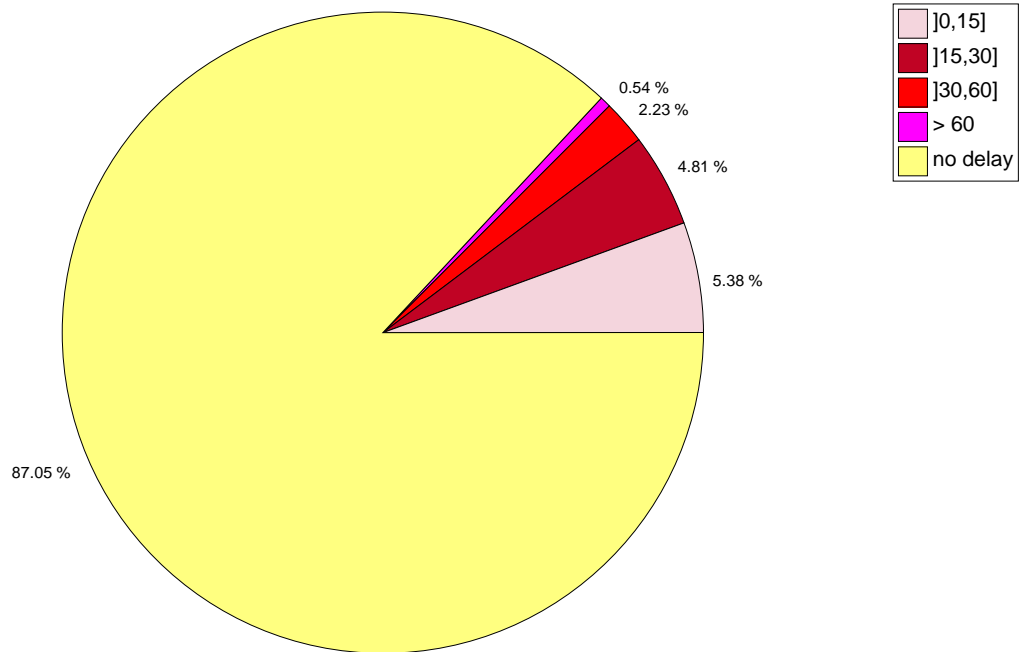
AVERAGE DAILY DATA

MONTH	DAILY TRAFFIC DEMAND	DAILY REGULATED FLIGHTS	DAILY DELAYED FLIGHTS	DAILY ATFM DELAY	MEAN DELAY FOR DELAYED FLIGHTS	MEAN DELAY FOR REGULATED FLIGHTS	MEAN DELAY FOR ALL FLIGHTS
08-08	30428	7553	4656	93772	20.1	12.4	3.1
08-09	30718	6868	4025	75722	18.8	11.0	2.5
08-10	28465	4990	2786	50076	18.0	10.0	1.8
08-11	24689	2459	1392	28385	20.4	11.5	1.1
08-12	22635	2470	1443	28690	19.9	11.6	1.3
09-01	22587	1956	1199	28689	23.9	14.7	1.3
09-02	23779	1908	1123	26486	23.6	13.9	1.1
09-03	24805	2158	1199	22189	18.5	10.3	0.9
09-04	26005	2397	1299	22574	17.4	9.4	0.9
09-05	26981	3281	1810	32925	18.2	10.0	1.2
09-06	28800	5009	2951	60558	20.5	12.1	2.1
09-07	29049	5915	3763	82375	21.9	13.9	2.8

TOTAL VALUES

MONTH	MONTHLY TRAFFIC DEMAND	MONTHLY REGULATED FLIGHTS	MONTHLY DELAYED FLIGHTS	MONTHLY ATFM DELAY	MEAN DELAY FOR DELAYED FLIGHTS	MEAN DELAY FOR REGULATED FLIGHTS	MEAN DELAY FOR ALL FLIGHTS
08-08	943257	234147	144322	2906940	20.1	12.4	3.1
08-09	921548	206046	120735	2271667	18.8	11.0	2.5
08-10	882428	154678	86365	1552350	18.0	10.0	1.8
08-11	740655	73759	41766	851550	20.4	11.5	1.1
08-12	701700	76583	44746	889386	19.9	11.6	1.3
09-01	700206	60649	37171	889372	23.9	14.7	1.3
09-02	665821	53430	31452	741621	23.6	13.9	1.1
09-03	768944	66888	37155	687851	18.5	10.3	0.9
09-04	780158	71903	38955	677223	17.4	9.4	0.9
09-05	836412	101716	56120	1020689	18.2	10.0	1.2
09-06	863985	150257	88541	1816735	20.5	12.1	2.1
09-07	900514	183365	116652	2553632	21.9	13.9	2.8

DISTRIBUTION OF TRAFFIC ACCORDING TO ATFM DELAY DURATION



SPECIAL EVENTS

Wednesday 01 July 2009

ANTALYA (CIV/MIL) : RADAR problems continued. PISA (MIL) : WIP on RWY. EDINBURGH : staffing problems. MADRID/TORREJON : (ARR & DEP) southerly RWY configuration. FRANKFURT/MAIN, ZURICH FLUGHAFEN, MUNCHEN : CB activity and thunderstorms. NICOSIA (ACC/FIC) : ATC capacity. WARSZAWA/ACC : combination of staffing and ATC capacity. MAKEDONIA (ACC,FIC) : staffing. ANTALYA (CIV/MIL) : unstable RADAR system. ATHINAI (ACC,FIC,FIR,UIR) : combination of ATC capacity, staffing and thunderstorms. Tampere ACC frequency and OLDI problems

Thursday 02 July 2009

ATHINAI (ACC,FIC,FIR,UIR), MAKEDONIA (ACC,FIC) : ATC capacity and staffing shortage. NICOSIA (ACC/FIC) : ATC capacity. ZURICH AREA, GENEVA AREA : thunderstorm activity. MADRID/TORREJON : (ARR and DEP). MADRID/BARAJAS : on south configuration with the consequent application. ISTANBUL/ATATURK : aerodrome capacity. RHEIN UAC, MUNCHEN ACC/FIC : CB activity. FIR-WIEN : CB activity. NICOSIA (ACC/FIC) : (E2S and WN) ATC capacity. PARIS-CHARLES DE GAULLE : (ARR & DEP) heavy thunderstorm. PARIS-LE BOURGET : (ARR) CB activity. KOS/IPPOKRATIS, RODOS/DIAGORAS, CHANIA/SOUDA : aerodrome capacity

Friday 03 July 2009

LONDON HEATHROW : (ARR) thunderstorms. PISA (MIL) : (ARR) WIP. thunderstorms. UK Daventry North thunderstorm activity. ZURICH AREA : thunderstorm activity. (M2, M3 and M4) ATC capacity. ATHINAI (ACC,FIC,FIR,UIR), RHEIN UAC : staffing issues

Saturday 04 July 2009

ATHINAI (ACC,FIC,FIR,UIR), MAKEDONIA (ACC,FIC) : staffing. FIR-WIEN : ATC capacity and weather. WARSZAWA/ACC : ATC capacity and staffing. ZAGREB ACC/FIR, ZURICH AREA, MADRID ACC/FIC, FIR PRAHA : ATC capacity. MUNCHEN : (ARR) weather. CANNES-MANDELIEU : (ARR) affected by ?Tour de France? organisation. ATHINAI (ACC,FIC,FIR,UIR), MAKEDONIA (ACC,FIC) : sectors collapsed due to staffing. MUNCHEN ACC/FIC, BARCELONA ACC/FIC : weather. IRAKLION/NIKOS KAZANTZAKIS : staffing problems. ISTANBUL/ATATURK : (ARR) aerodrome capacity

Sunday 05 July 2009

ATHINAI (ACC,FIC,FIR,UIR) : ATC capacity and staffing. MADRID ACC/FIC, SEVILLA ACC/FIC : FL management at VTB. NICOSIA (ACC/FIC) : (WN) ATC capacity. RODOS/DIAGORAS : ATC capacity and staffing. NICE-COTE D AZUR : (ARR and DEP). CANNES-MANDELIEU : affected by ?Tour de France? race organisation. MUNCHEN : weather. PISA (MIL), PARIS/ORLY : WIP. PALMA DE MALLORCA : ATC capacity. FIR-WIEN, GENEVA AREA, ZURICH AREA, MUNCHEN ACC/FIC, DUSSELDORF : weather. SOUTHAMPTON : (ARR) taxiway closure. ISTANBUL/ATATURK : aerodrome capacity. LARNAKA/INTL : ATC capacity. MADRID/BARAJAS : (ARR) rate reduced due to bomb threat, one RWY closed

Monday 06 July 2009

LONDON ACC (CIVIL) : (LYD and DVR sectors) reduced rate due to CB activity. ATHINAI (ACC,FIC,FIR,UIR) : ATC capacity and staffing. NICOSIA (ACC/FIC) : ATC capacity. Munchen (ARR) bad weather. Pisa (MIL) (ARR) WIP. Edinburgh security incident. Munich, Heathrow, Gatwick and London City (ARR) CB activity. Istanbul/Ataturk aerodrome capacity. Karlsruhe ATC staffing.

Tuesday 07 July 2009

LONDON ACC (CIVIL) : (LMW and LME sectors) reduced rate due to CB activity. ATHINAI (ACC,FIC,FIR,UIR) : ATC capacity and staffing. NICOSIA (ACC/FIC) (WN and E2S sectors) ATC capacity. London/Heathrow (ARR) CB activity and strong winds.. PARIS/ORLY : (ARR) WIP. MILANO/LINATE : (ARR) CB activity. Heathrow (ARR) strong winds and CB activity. Munich (ARR) CB activity. Istanbul/Ataturk aerodrome capacity. PARIS/ORLY : WIP. PARIS-CHARLES DE GAULLE : CB activity. NICOSIA (ACC/FIC) (E2, S1 and S2 sectors combined and WN sector) ATC capacity. ATHINAI (ACC,FIC,FIR,UIR) ongoing staffing problems

Wednesday 08 July 2009

KOS/IPPOKRATIS : (ARR) aerodrome capacity. Frankfurt (ARR) strong winds on final approach. MAKEDONIA (ACC,FIC) : ATC staffing. NICOSIA (ACC/FIC) (E and WN sectors) ATC capacity. Hamburg (ARR) CB activity. Dusseldorf Thunderstorms. FIR-WIEN : Thunderstorms

Thursday 09 July 2009

Dusseldorf ATC capacity.. ATHINAI/ELEFThERIOS VENIZELOS : (ARR and DEP) ATC staffing. CHANIA/SOUDA : (ARR) aerodrome capacity. Pisa (MIL) WIP. PARIS/ORLY : WIP on the RWY. Istanbul/Ataturk aerodrome capacity. ATHINAI (ACC,FIC,FIR,UIR) (en-route restrictions) ATC staffing. NICOSIA (ACC/FIC) ATC capacity

Friday 10 July 2009

FIR-WIEN : (ARR) aerodrome capacity. Istanbul/Ataturk (ARR) aerodrome capacity. Athinai and Makedonia ACC ATC staffing. Langen staff shortage. LONDON ACC (CIVIL) staff shortage. MADRID/TORREJON : (ARR and DEP) south configuration at MADRID ACC/FIC. PALMA DE MALLORCA : ATC capacity. ATHINAI/ELEFThERIOS VENIZELOS, IRAKLION/NIKOS KAZANTZAKIS : staffing. MADRID ACC/FIC : (BLI, PAU, TLU and STM sectors) staffing and ATC capacity

Saturday 11 July 2009

Cannes-Mandelieu ATC capacity. ATHINAI (ACC,FIC,FIR,UIR), LGMD staffing. FIR-WIEN : staffing problems. CRANFIELD : (TMA SE) staff shortage. CHANIA/SOUDA : aerodrome capacity. Istanbul/Ataturk (ARR) aerodrome capacity. WIEN-SCHWECHAT : ATC capacity

Sunday 12 July 2009

(M4) ATC capacity. TIRANA FIR/UIR/FIC/ACC/SAR : (HI2) telephone problems. Istanbul/Ataturk aerodrome capacity. IRAKLION/NIKOS KAZANTZAKIS : (ARR) staffing. MADRID ACC/FIC : (BLI collapsed sector) ATC capacity. NICOSIA (ACC/FIC) (WN sector) ATC capacity. Istanbul/Ataturk (ARR) aerodrome capacity.

Monday 13 July 2009

DUSSELDORF : ATC capacity. ATHINAI/ELEFThERIOS VENIZELOS : (ARR & DEP) ATC capacity. FRANKFURT/MAIN (ARR) low ceiling. ISTANBUL/ATATURK (ARR) aerodrome capacity. IRAKLION/NIKOS KAZANTZAKIS (ARR) ATC staffing. BRUSSELS-NATIONAL : ACC staffing problems. FIR PRAHA : (East-high sector) ATC capacity. WARSZAWA/ACC : (JR sector) ATC capacity. IRAKLION/NIKOS KAZANTZAKIS (ARR) ATC staffing. LONDON ACC (CIVIL) : (CTY sector) staffing issues. SANTIAGO : (TMA) RADAR failure

Tuesday 14 July 2009

ATHINAI/ELEFThERIOS VENIZELOS : ATC capacity. ZAKINTHOS/DIONISIOS SOLOMOS, MIKONOS : aerodrome capacity. ISTANBUL/ATATURK aerodrome capacity. VILAFRANCA (MIL.) : (CTR) RADAR maintenance. KOLN/BONN : (approach) staffing. MADRID/TORREJON : ARR & DEP RWY configuration inMADRID/BARAJAS.

Wednesday 15 July 2009

DUBLIN, VENEZIA/TESSERA : bad weather (fog). KOS/IPPOKRATIS : aerodrome capacity. ISTANBUL/ATATURK (ARR) aerodrome capacity. CANNES-MANDELIEU (ARR) aerodrome capacity. VILAFRANCA (MIL.) : (global) RADAR failure. NICOSIA (ACC/FIC) : ATC capacity. WARSZAWA/ACC : (J sector) ATC capacity. LARNAKA/INTL : ATC capacity. MADRID/TORREJON : (ARR & DEP) aerodrome capacity. WIEN-SCHWECHAT : bad weather. RHEIN UAC : (ERL sector) bad weather. MADRID ACC/FIC : (BLI) ATC capacity

Thursday 16 July 2009

MALAGA (ARR), ATHINAI/ELEFThERIOS VENIZELOS (ARR & DEP), KOS/IPPOKRATIS, RODOS/DIAGORAS, CHANIA/SOUDA, ZAKINTHOS/DIONISIOS SOLOMOS (ARR) aerodrome capacity. CANNES-MANDELIEU : ATC capacity. ISTANBUL/ATATURK : (ARR) aerodrome capacity. VENEZIA/TESSERA : RADAR and radio frequency failure. BERLIN-SCHONEFELD : aircraft incident on the RWY. Belgian,German,Spanish,Austrian,Greek, Polish and Swiss ACC have had staffing problems.. LONDON ACC (CIVIL) : (Hurn sectors) CB activity

Friday 17 July 2009

FRANKFURT/MAIN, MUNCHEN, DUSSELDORF, LONDON HEATHROW : bad weather. IRAKLION/NIKOS KAZANTZAKIS. CHANIA/SOUDA, ZAKINTHOS/DIONISIOS SOLOMOS, SAMOS, ARAXOS (MIL), MIKONOS : aerodrome capacity. LONDON/CITY, LONDON HEATHROW : CB activity. UK, Germany, Asustria,Switzerland,France thunderstorm activity

Saturday 18 July 2009

ISTANBUL/ATATURK aerodrome capacity. CANNES-MANDELIEU ATC capacity. PISA (MIL) : strong winds. VENEZIA/TESSERA strong winds. BARCELONA : staffing. CANNES-MANDELIEU aerodrome capacity. RHEIN UAC, Langen : staffing. ZAGREB ACC/FIR : CB activity. FIR-WIEN : staff shortage. WARSZAWA/ACC : staff shortages

Sunday 19 July 2009

FRANKFURT/MAIN low clouds. ISTANBUL/ATATURK aerodrome capacity. ZAKINTHOS/DIONISIOS SOLOMOS : aerodrome capacity. GENEVE : staffing. MADRID/TORREJON : (ARR) ATC capacity. MADRID/BARAJAS (BLI) ATC capacity

Monday 20 July 2009

EDINBURGH staffing. ATHINA/ELEFThERIOS VENIZELOS aerodrome capacity. (East sector) frequency failure. LONDON ACC (CIVIL) (STU and BHD sectors) staffing. RHEIN UAC (NTM area) TRA activity.

Tuesday 21 July 2009

KEFALLINIA,MIKONOS, CHANIA/SOUDA, SAMOS, SANTORINI, ZAKINTHOS/DIONISIOS SOLOMOS : aerodrome capacity. LONDON HEATHROW (ARR) CB activity. MAKEDONIA (ACC,FIC) (West sector) staffing. FIR-WIEN : staffing. RHEIN UAC : staffing. NICOSIA (ACC/FIC) : (ES and WN sectors) ATC capacity. ISTANBUL/ATATURK (ARR) aerodrome capacity. MILOS : staffing. BURSA (MIL-CIV) : ATC capacity. MADRID ACC/FIC : (BLI sector) ATC capacity

Wednesday 22 July 2009

FRANKFURT/MAIN, DUSSELDORF (TMA) thunderstorms. ISTANBUL/ATATURK (ARR) aerodrome capacity. NICOSIA (ACC/FIC) (WN sector) ATC capacity. ADRID/TORREJON : (ARR and DEP) RWY configuration at MADRID/BARAJAS. PORTO : low visibility. MADRID ACC/FIC (BLI sector) ATC capacity. NICOSIA (ACC/FIC) (WN sector) ATC capacity. RHEIN UAC (SAL sector) staffing

Thursday 23 July 2009

MADRID/BARAJAS : (ARR and DEP) ATC staffing. ISTANBUL/ATATURK (ARR) aerodrome capacity. MADRID ACC/FIC (TZI and BLI sectors) ATC capacity. ZURICH AREA : (M3 and M4 sectors) ATC capacity. MUNCHEN, ZURICH FLUGHAFEN, PARIS/ORLY,FRANKFURT/MAIN, PRAHA/RUZYNE : thunderstorms. MADRID/TORREJON : (ARR and DEP) RWY configuration at MADRID/BARAJAS. PISA (MIL) : WIP. BARI : closure due accident. NICOSIA (ACC/FIC) (ES sector) ATC capacity. RHEIN UAC CBs and turbulence. FIR-WIEN : (NLU sector). PARIS (FIC/ACC/UAC) : (UJ sector) CB activity

Friday 24 July 2009

PISA (MIL) : capacity reduction due WIP. MADRID/TORREJON : (ARR and DEP) RWY configuration at MADRID/BARAJAS. FIR-WIEN : (SOU and E sector) staffing. ZURICH AREA : (M4 sector) ATC capacity. LONDON ACC (CIVIL) (DVR and BCN sectors)CB activity. LONDON HEATHROW LONDON GATWICK, LONDON/CITY, LONDON LUTON, LONDON STANSTED, MANCHESTER : weather. AMSTERDAM/SCHIPHOL : (ARR via ARTIP) weather. GENEVE : (ARR) CB activity. MADRID ACC/FIC (BLI and DOM sectors) ATC capacity

Saturday 25 July 2009

CANNES-MANDELIEU ATC capacity. AJACCIO/CAMPO DELL ORO, FIGARI,SUD-CORSE ATC capacity. ATHINAI/ELEFTHERIOS VENIZELOS (DEP) aerodrome capacity. CANNES-MANDELIEU aerodrome capacity. ISTANBUL/ATATURK aerodrome capacity. WARSZAWA/ACC : staffing problems. FIR-WIEN : staffing problems combined with major computer processing failure. MAKEDONIA (ACC,FIC) (EU and W sectors) staffing problems. ATHINAI (ACC,FIC,FIR,UJR) : (MIL sector) ATC capacity. FIR PRAHA : (NEH sector) ATC capacity

Sunday 26 July 2009

NICOSIA (ACC/FIC) (E and W sectors). ATHINAI (ACC,FIC,FIR,UJR) : (KFPL and MIL sectors) ATC capacity. ZAGREB ACC/FIR : (South upper and low) RHEIN UAC ATC capacity. DUSSELDORF ACC/FIC : staffing issues. FIR-WIEN : (EAL, SOU, and WHT sectors) staffing. ISTANBUL/ATATURK (ARR) aerodrome capacity. CANNES-MANDELIEU aerodrome capacity

Monday 27 July 2009

RHEIN UAC,LANGEN UAC and FIR-WIEN (ACCs) staffing issues. LONDON HEATHROW strong winds

Tuesday 28 July 2009

DUSSELDORF staffing. MADRID/TORREJON (ARR and DEP) RWY CNF at MADRID/BARAJAS. ISTANBUL/ATATURK aerodrome capacity. ALICANTE staffing. ATHINAI (ACC,FIC,FIR,UJR) : (MILOS sector) ATC Capacity. ZURICH AREA (M4 sector) ATC Capacity

Wednesday 29 July 2009

NICOSIA (ACC/FIC) (WN sector) capacity. DUSSELDORF staffing issues. MADRID/TORREJON (ARR and DEP) RWY CNF at MADRID/BARAJAS. KOS/IPPOKRATIS : aerodrome capacity. ISTANBUL/ATATURK aerodrome capacity. BRUSSELS-NATIONAL staffing problems.

Thursday 30 July 2009

ALICANTE staffing issues. PISA (MIL) WIP on RWY. FIR PRAHA problems with the new RADAR software. FIR-WIEN staff shortage. NICOSIA (ACC/FIC) ATC Capacity. ISTANBUL/ATATURK aerodrome capacity. MADRID/TORREJON (ARR and DEP) RWY CNF at MADRID/BARAJAS. PALMA DE MALLORCA : (ARR and DEP) TFC stopped due to security alert

Friday 31 July 2009

LONDON HEATHROW late NAT E/B arrivals. BRUSSELS-NATIONAL (ARR) staff shortage. ISTANBUL/ATATURK aerodrome capacity. MADRID/TORREJON (ARR and DEP) RWY CNF at MADRID/BARAJAS. CANNES-MANDELIEU (ARR) aerodrome capacity. ATHINAI/ELEFTHERIOS VENIZELOS (DEP) ATC capacity